

時 系 列 図

グラフの見方

今回算出した統計値のグラフを次ページ以降に示す。風向については、月別の風向別百分率を風配図として示した。その他の要素については、月平均（積算）時系列（上段）、年平均（積算）時系列（中段）、月別気候値（下段）の3種のグラフを示した。以下に各グラフの見方を述べる。

・風配図

月別の風向（16方位）別出現頻度を百分率（%）であらわす。丸カッコ内の数字は、算出に用いた資料年数を示す。参考値の場合は破線で示す。

・月平均（積算）時系列

月平均時系列の場合、折れ線グラフで表す。図中の黒丸は完全値、白丸は準完全値を示し、これらを折れ線で結んだ。十字は資料不足値を示している。

月積算時系列の場合、棒グラフで表す。黒塗りの棒グラフは完全値であり、白抜きの棒グラフは資料不足値を示している。

・年平均（積算）時系列

年平均時系列の場合、折れ線グラフで表す。図中の黒丸は完全値、白丸は準完全値を示し、これらを折れ線で結んだ。十字は資料不足値を示している。

年積算時系列の場合、棒グラフで表す。黒塗りの棒グラフは完全値であり、白抜きの棒グラフは資料不足値を示している。

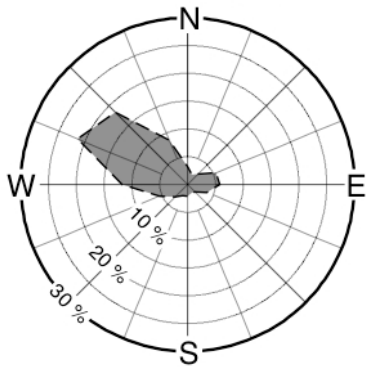
丸カッコ内の数字は、その年の年統計量を求める際に使用した資料月数を示す。

・月別気候値

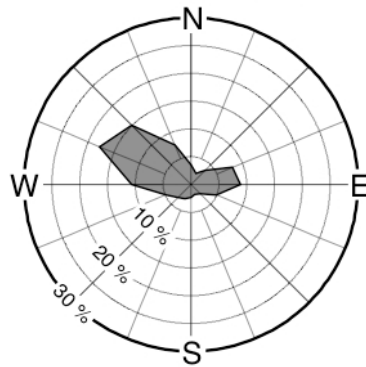
日照時間、降水量、蒸発散量のグラフは棒グラフで、その他は折れ線グラフで表す。気候値算出に用いた資料年数が24年の完全値の場合は黒丸（棒グラフの場合は黒塗り）、20年～23年の準完全値の場合は白丸（棒グラフの場合は白抜き）、20年未満の参考値の場合は十字（棒グラフの場合は白抜き・破線）で示している。誤差棒は標準偏差を示す。丸カッコ内の数字は、統計量算出の際の資料年数を示す。

・ 風向 (風配図)

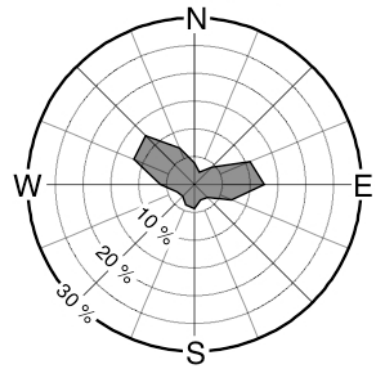
January (18)



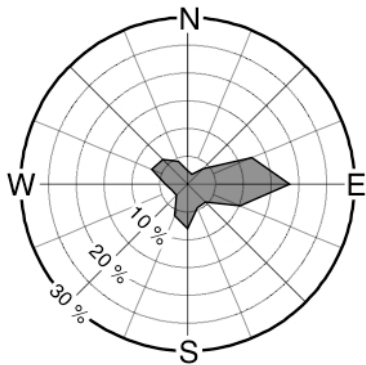
February (21)



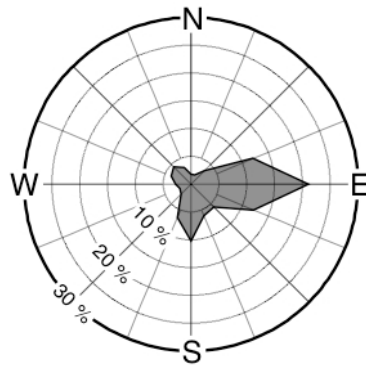
March (21)



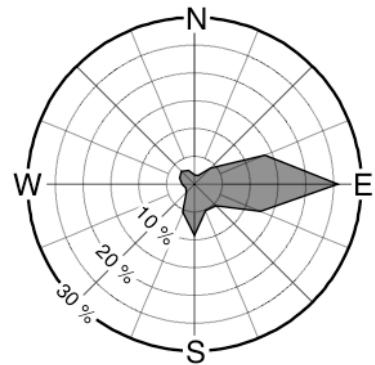
April (22)



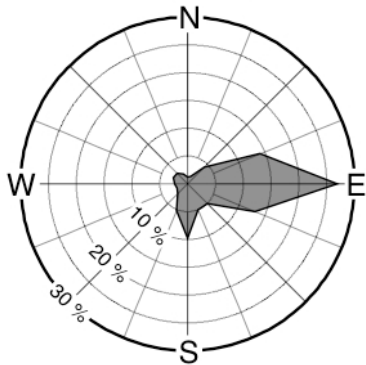
May (23)



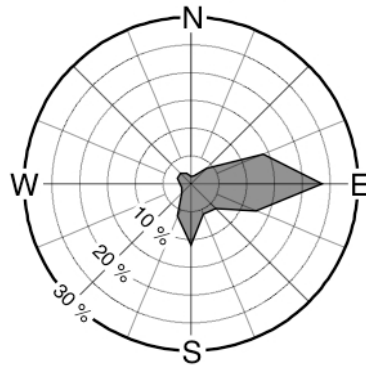
June (22)



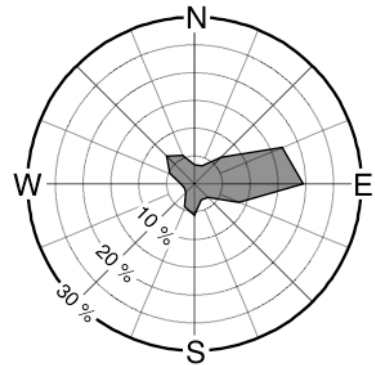
July (22)



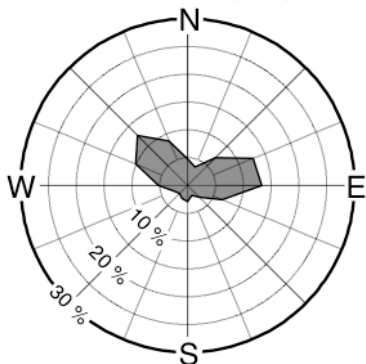
August (23)



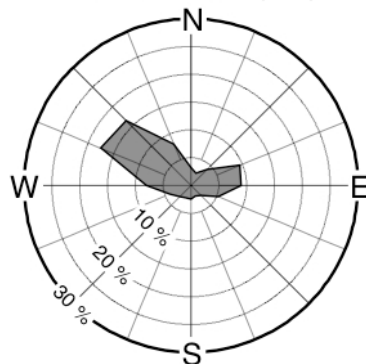
September (20)



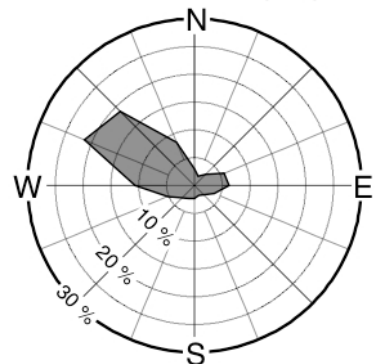
October (21)



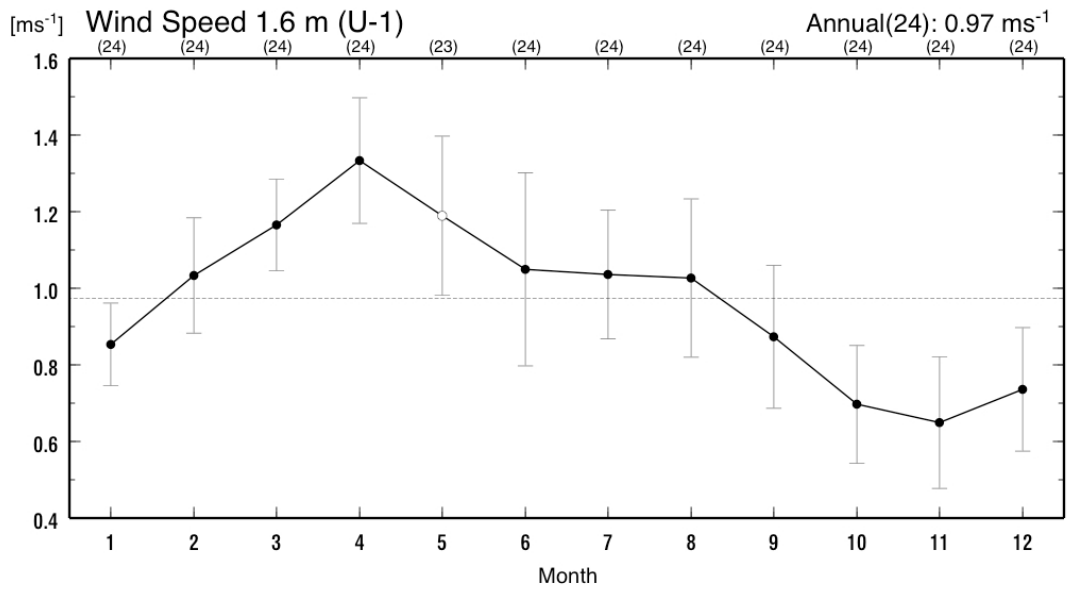
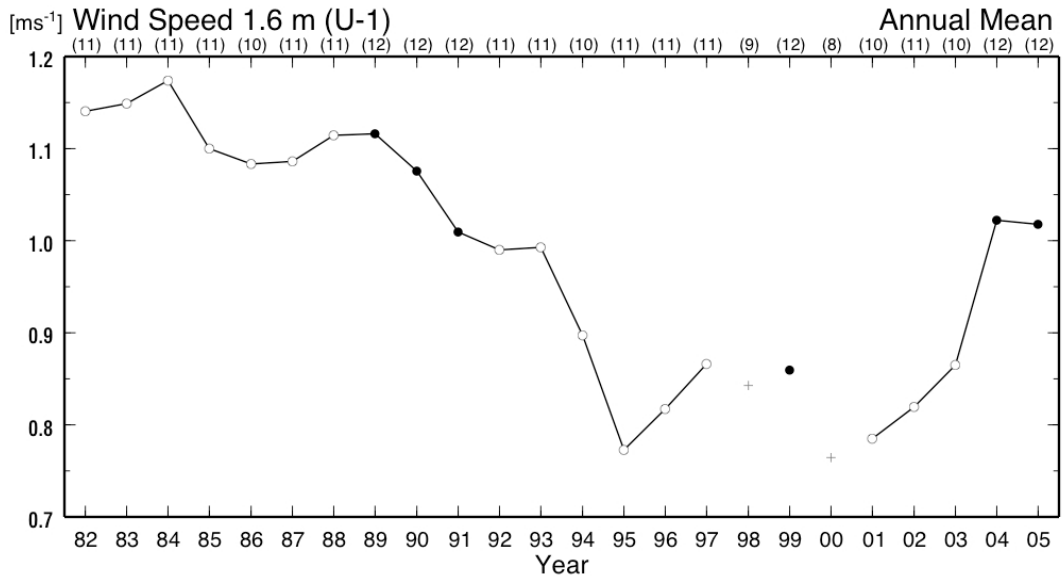
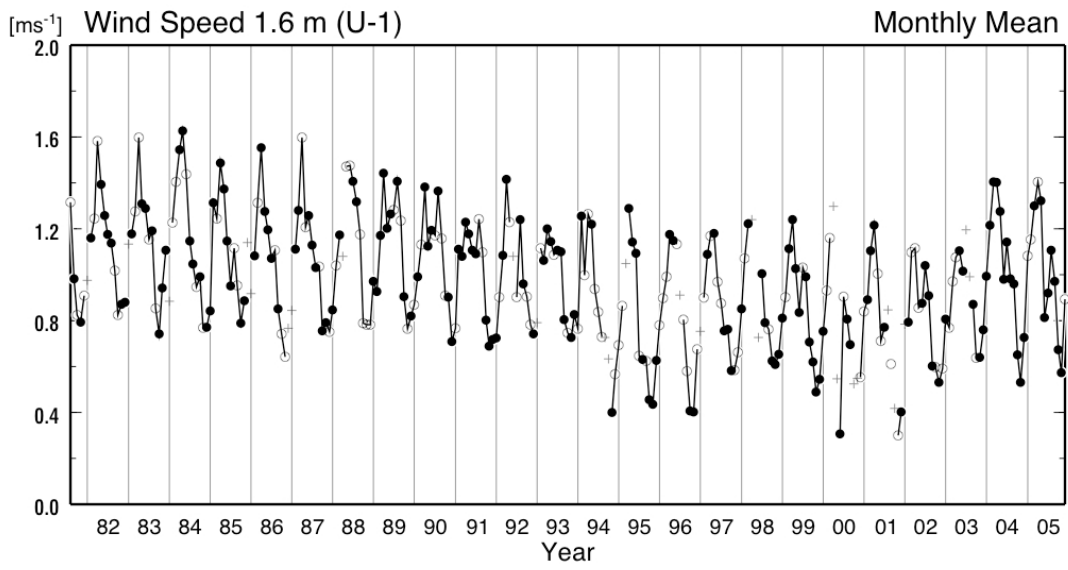
November (22)



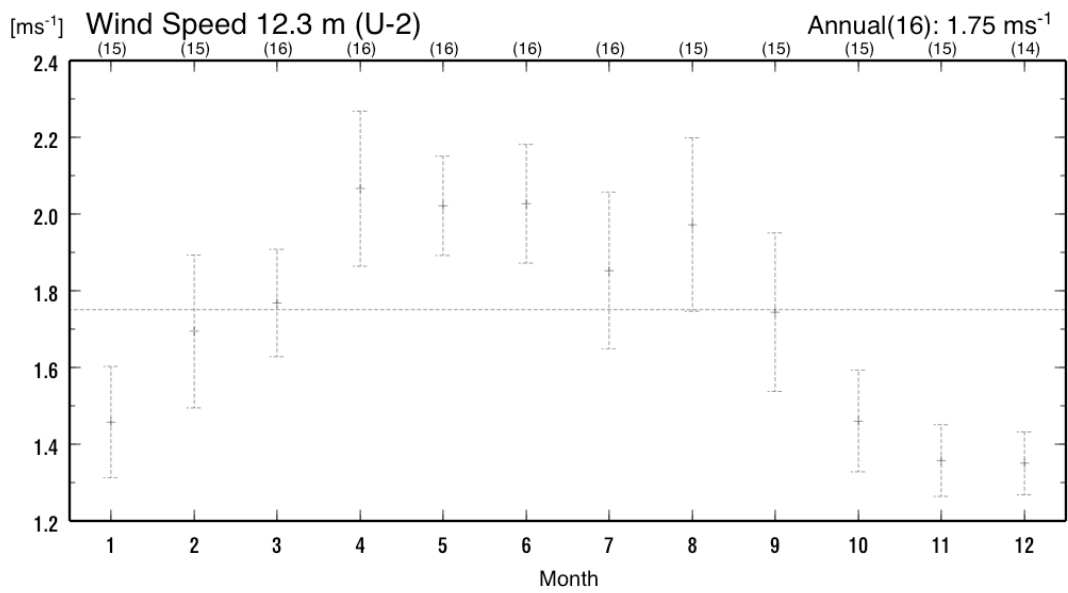
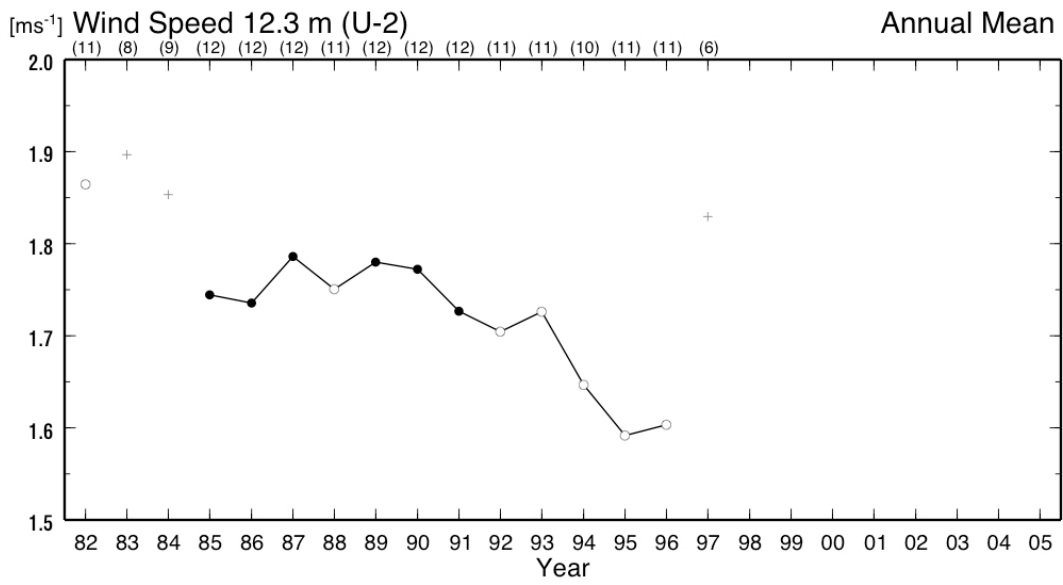
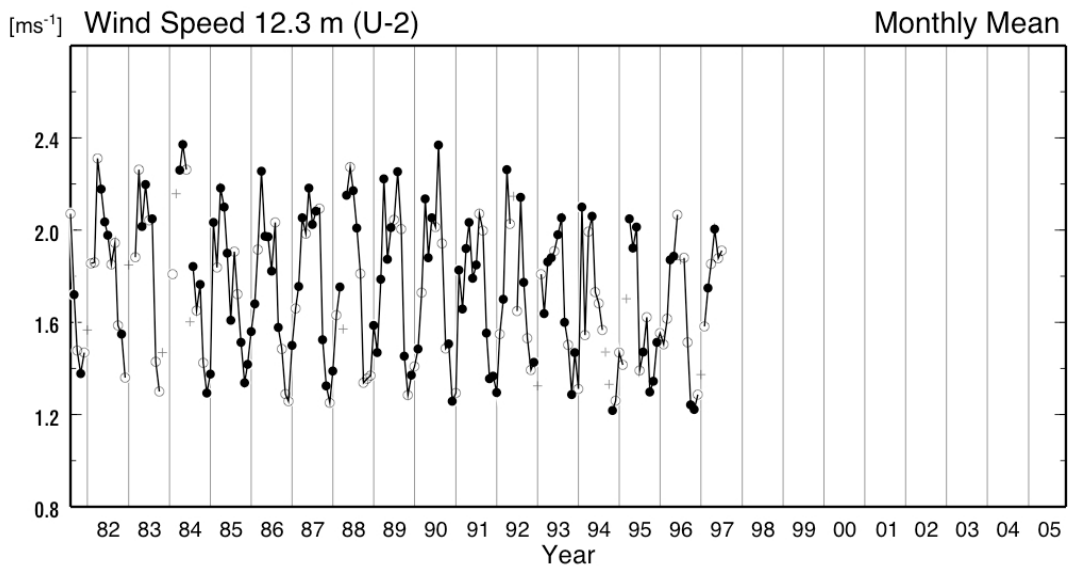
December (23)



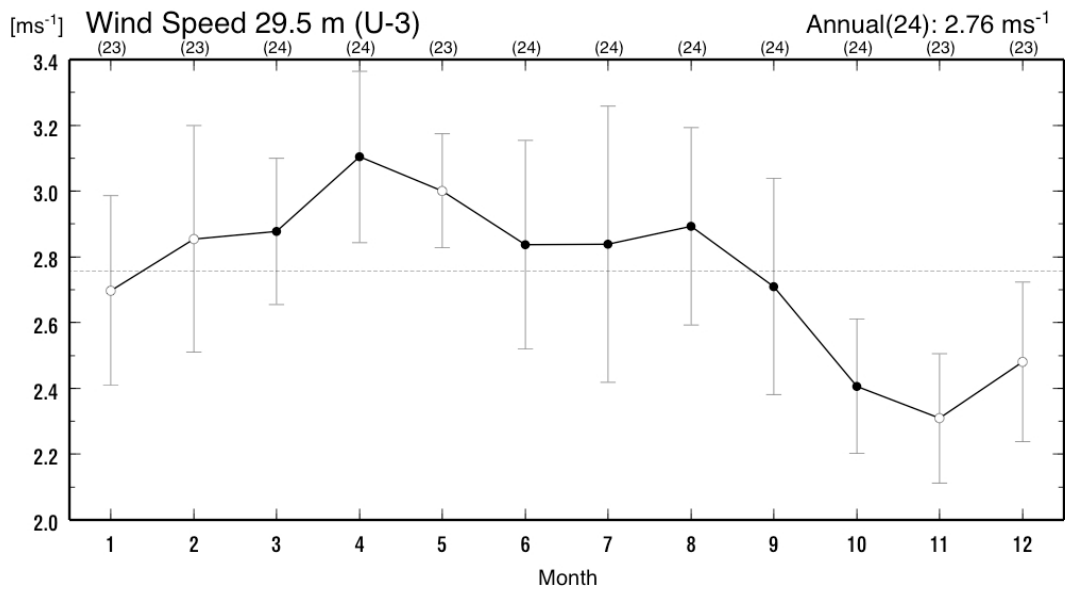
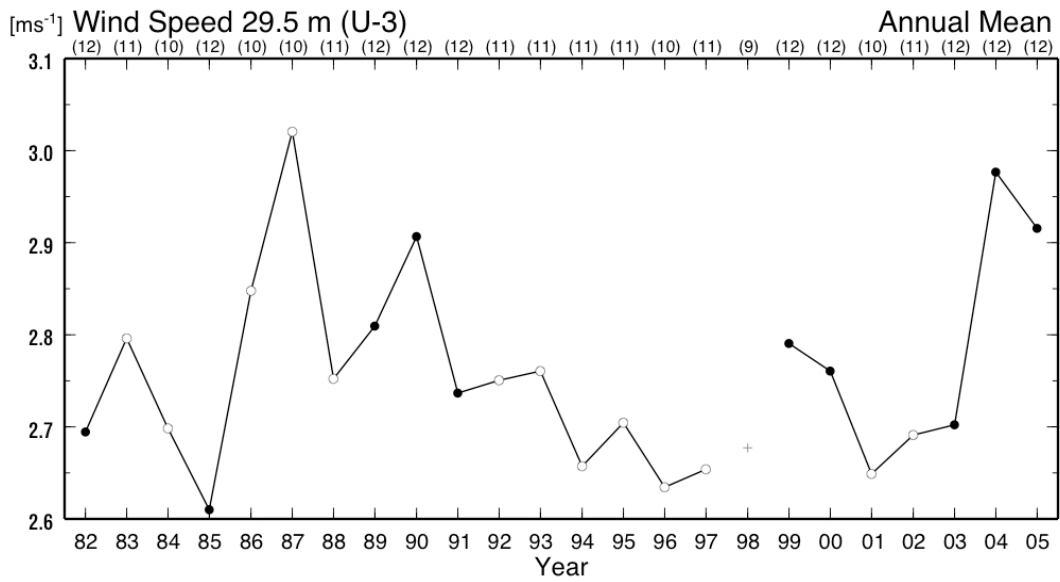
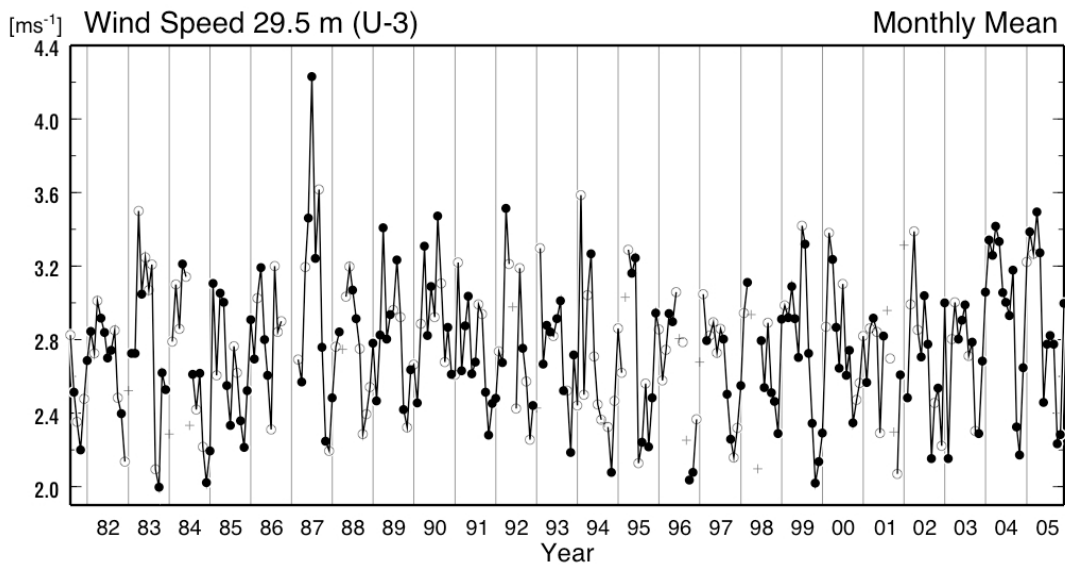
・ 風速 1.6 m (U-1)



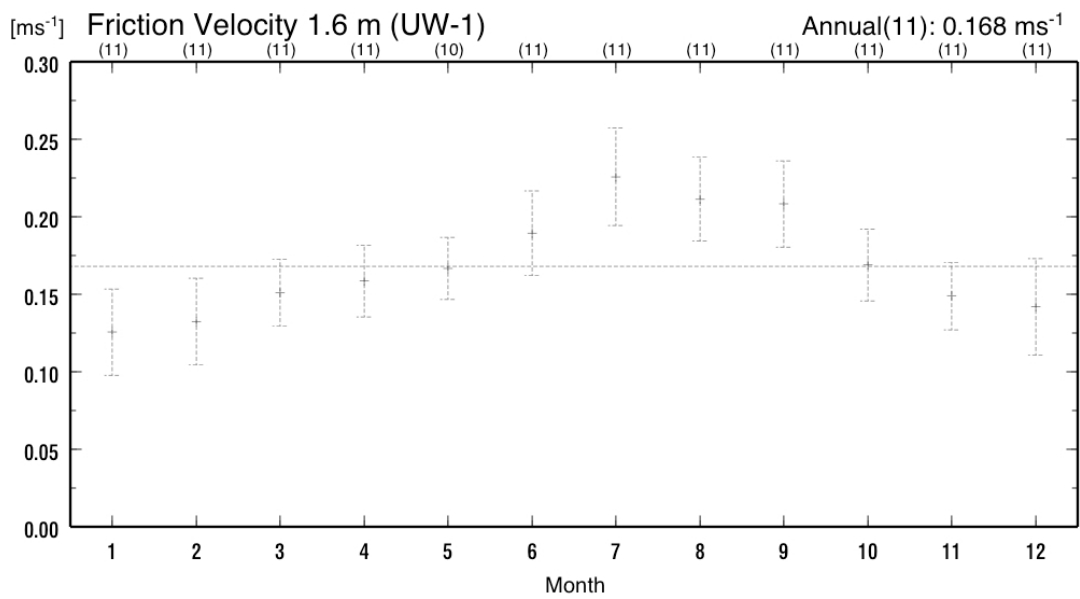
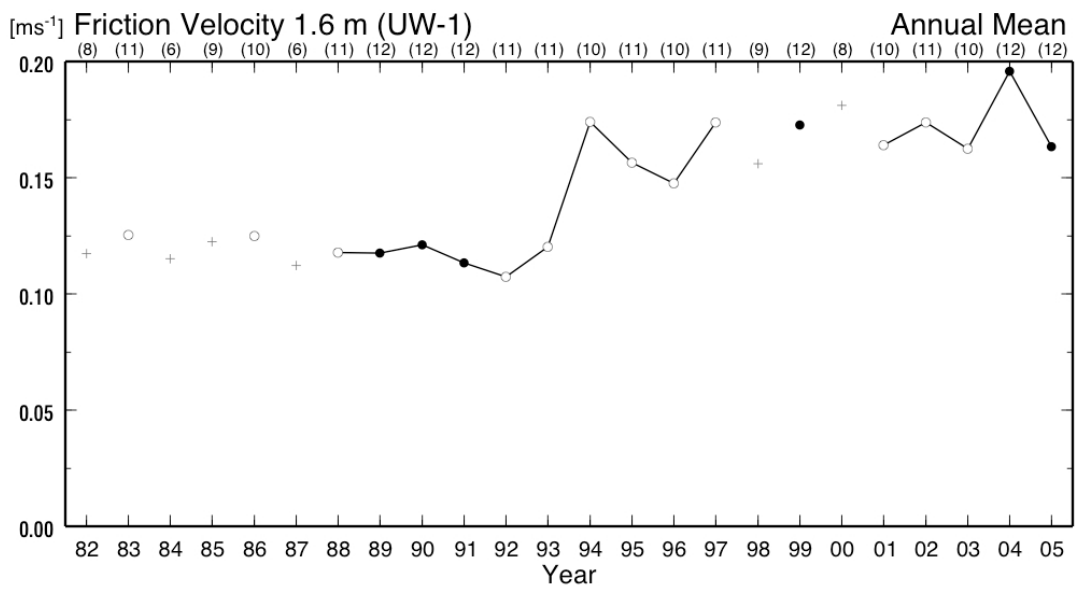
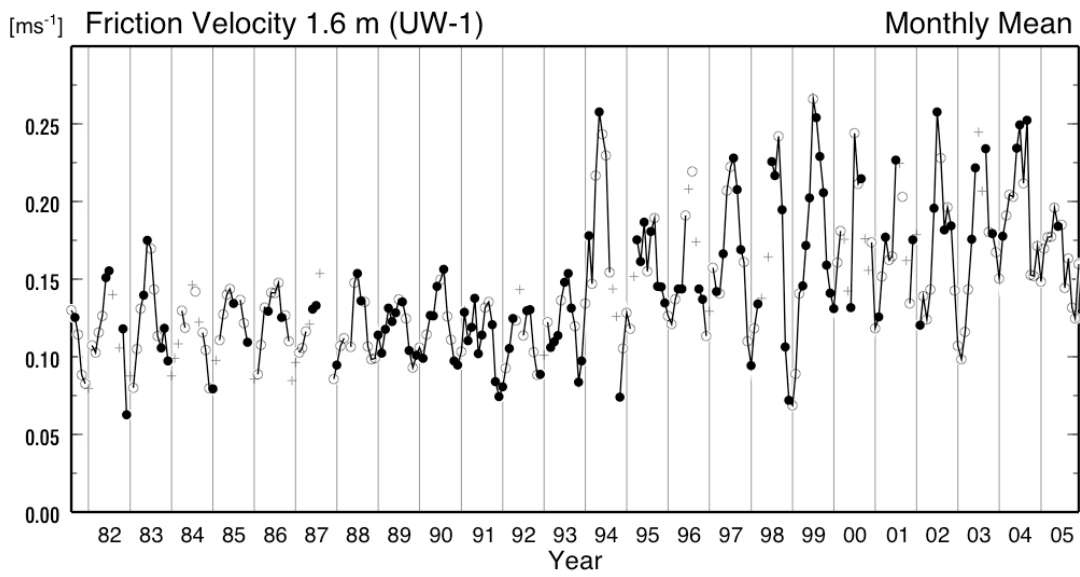
・ 風速 12.3 m (U-2)



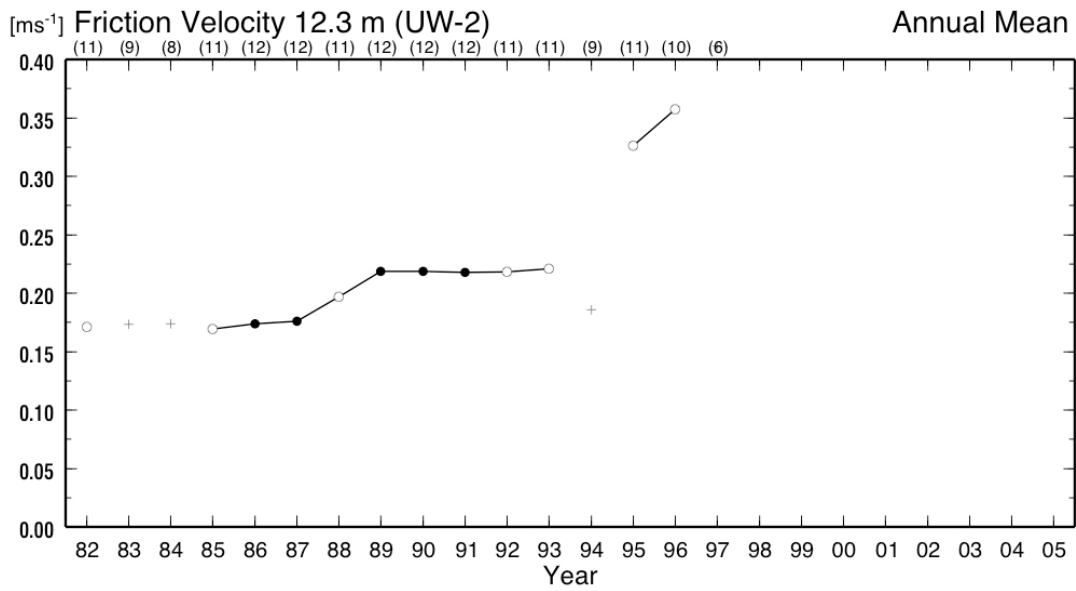
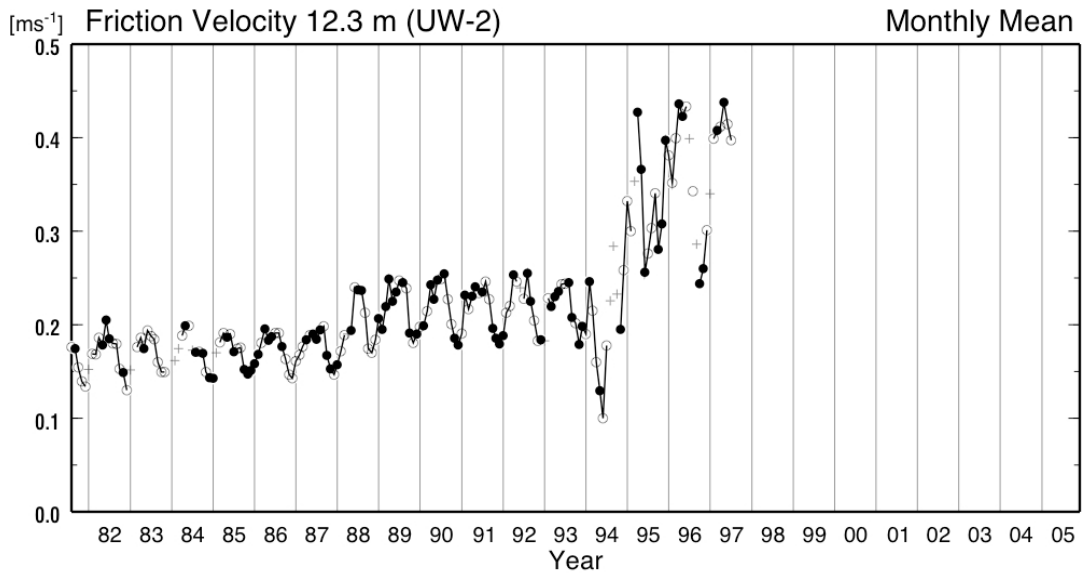
・ 風速 29.5 m (U-3)



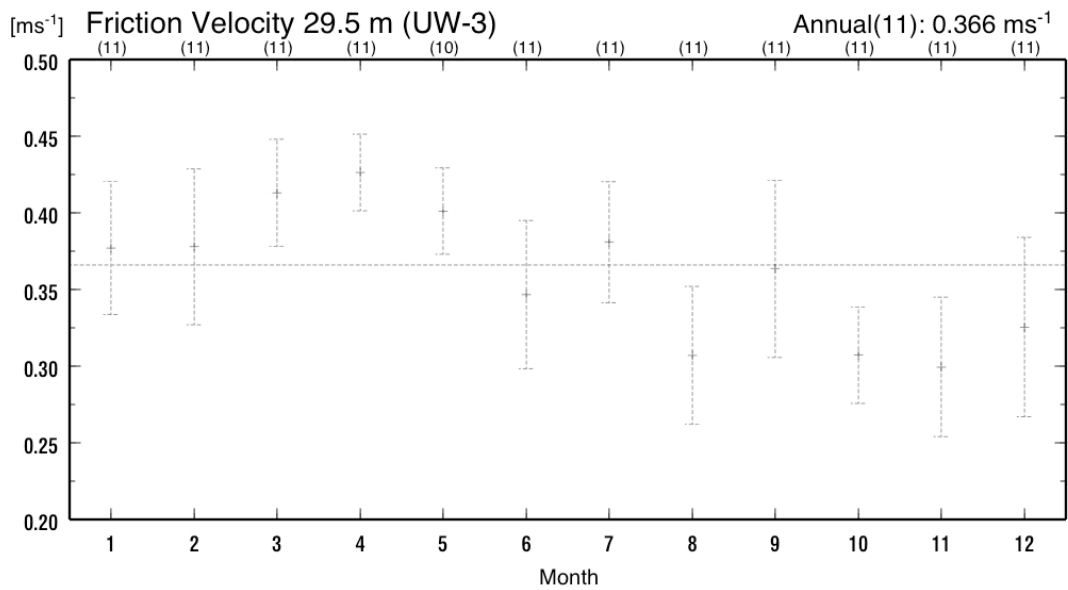
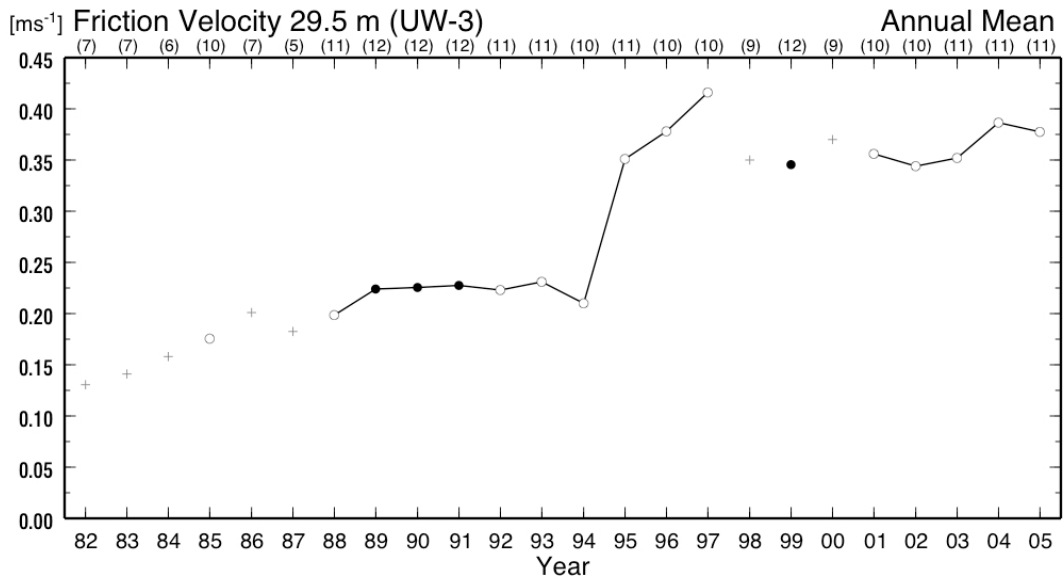
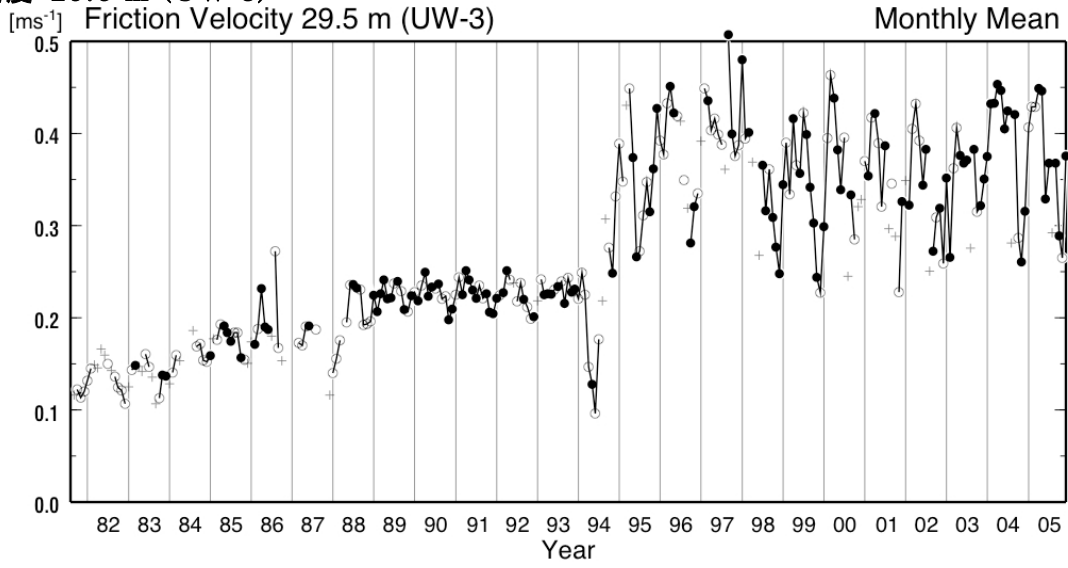
・ 摩擦速度 1.6 m (UW-1)



・ 摩擦速度 12.3 m (UW-2)

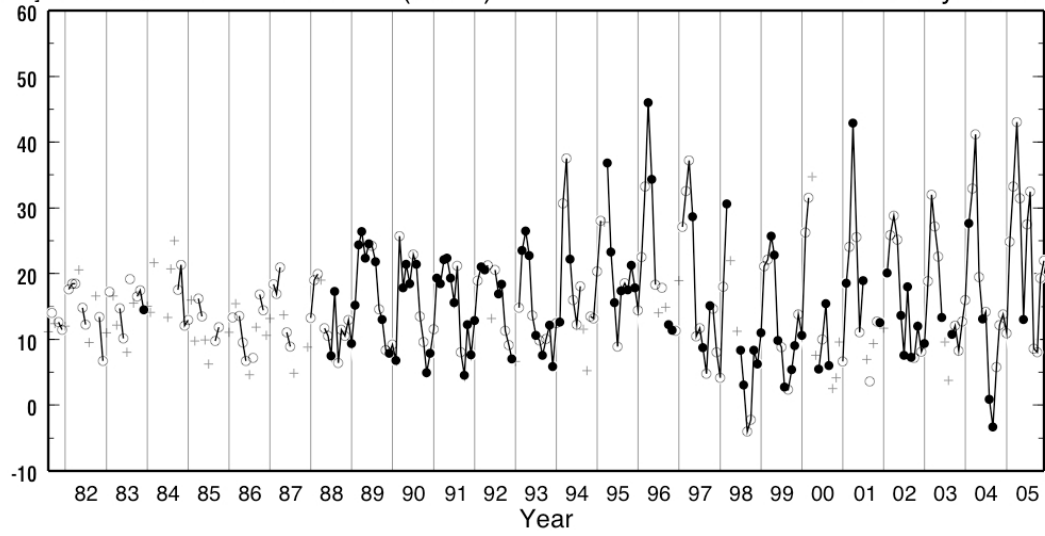


・ 摩擦速度 29.5 m (UW-3)

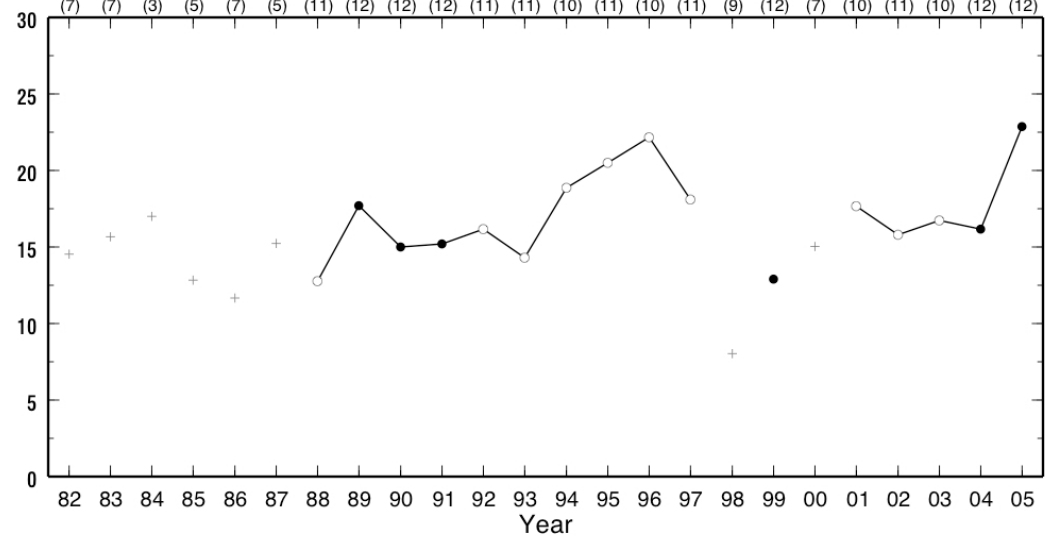


・ 顕熱フラックス 1.6 m (WT-1)

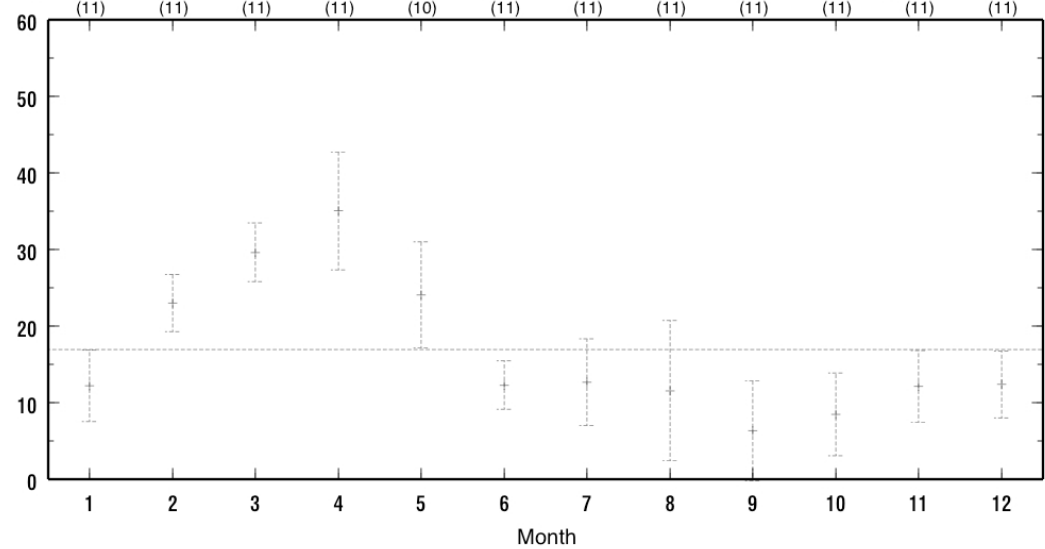
[Wm⁻²] Sensible Heat Flux 1.6 m (WT-1) Monthly Mean



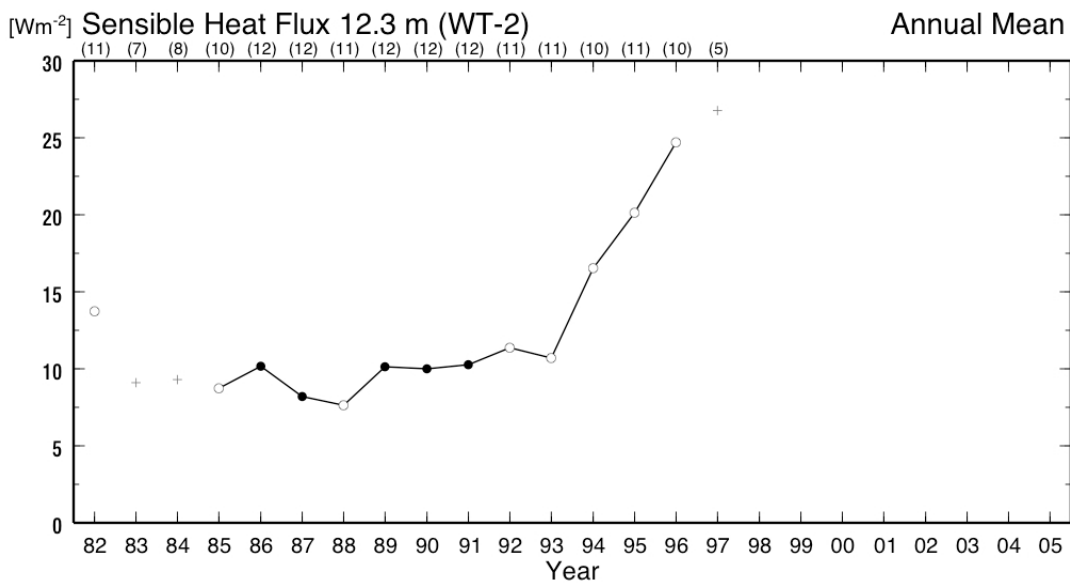
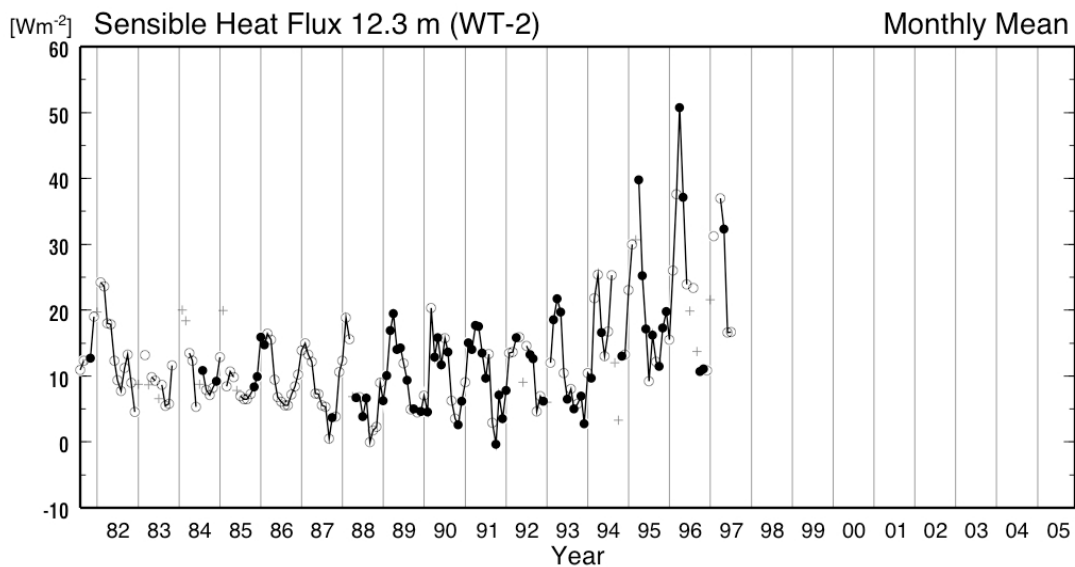
[Wm⁻²] Sensible Heat Flux 1.6 m (WT-1) Annual Mean



[Wm⁻²] Sensible Heat Flux 1.6 m (WT-1) Annual(11): 16.9 Wm⁻²

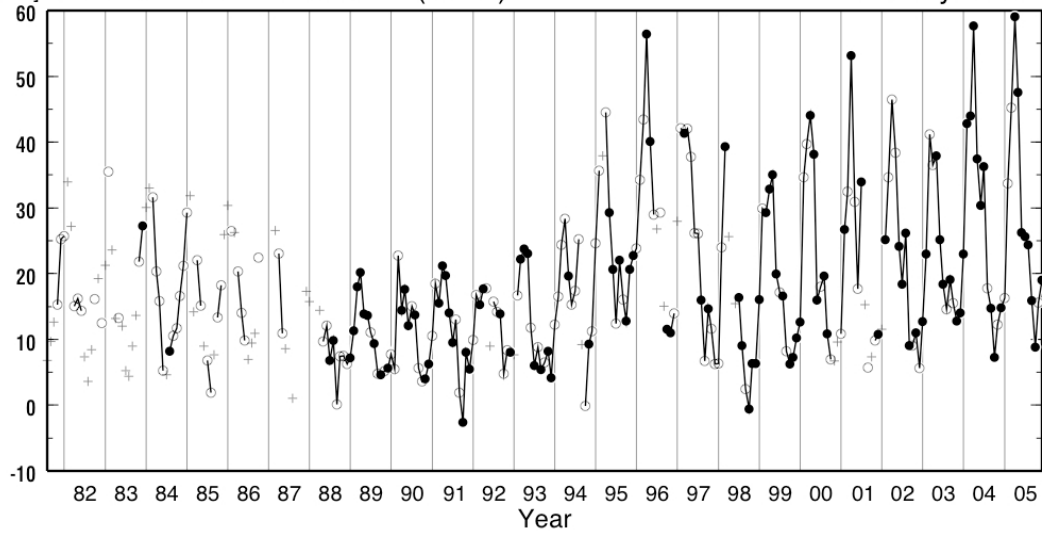


・ 顕熱フラックス 12.3 m (WT-2)

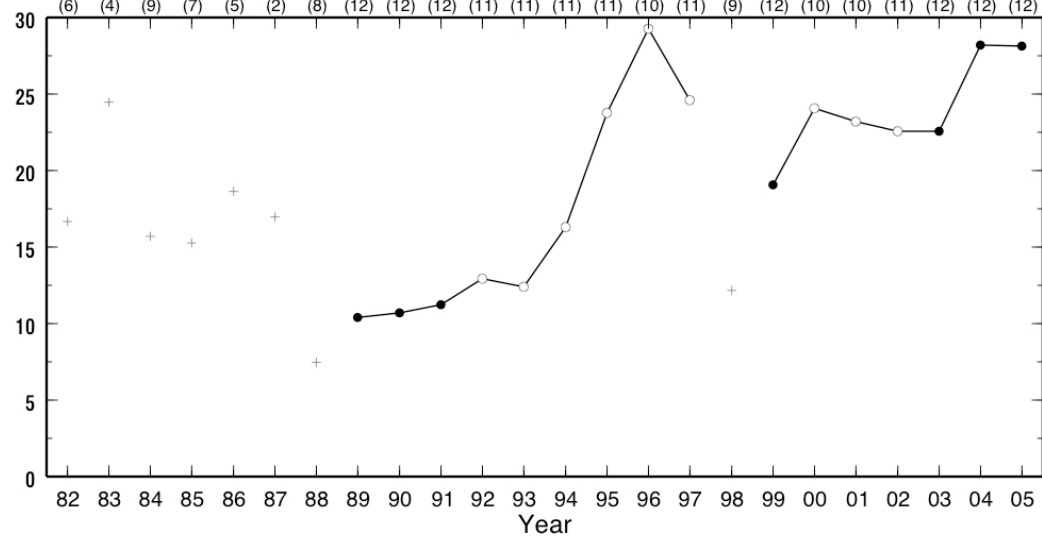


・ 顕熱フラックス 29.5 m (WT-3)

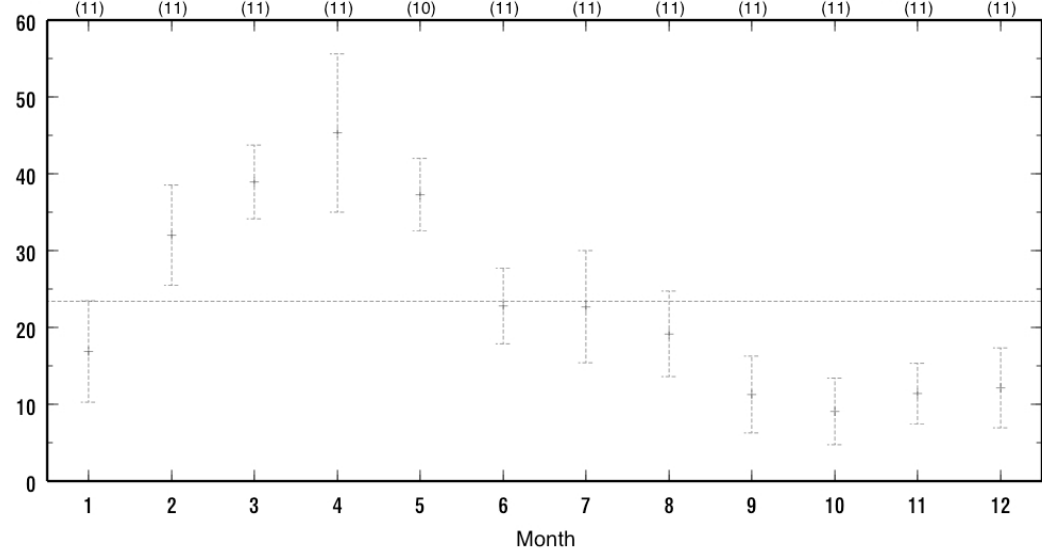
[Wm⁻²] Sensible Heat Flux 29.5 m (WT-3) Monthly Mean



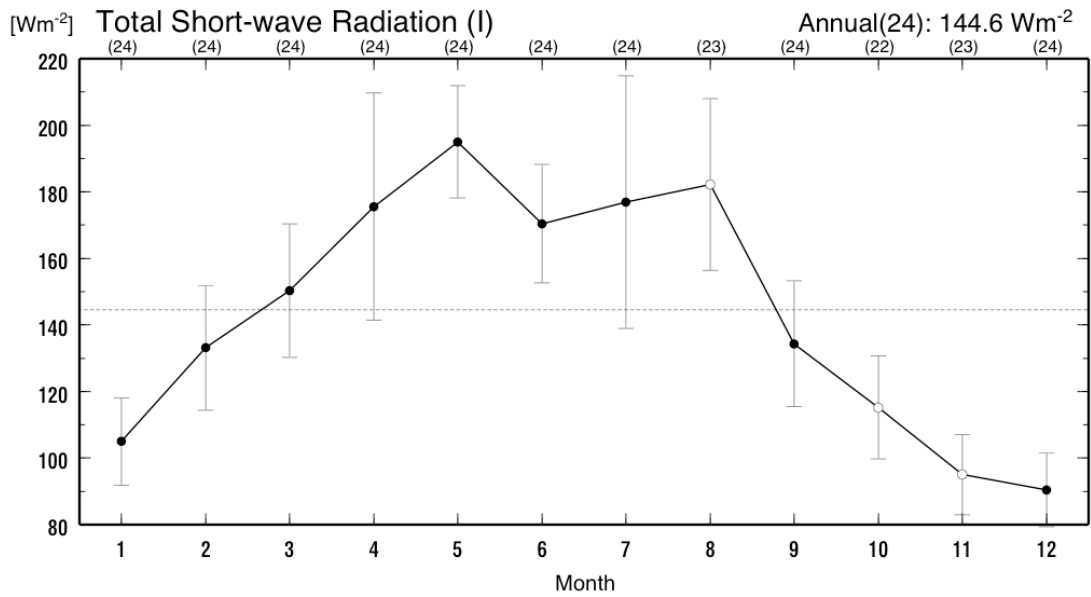
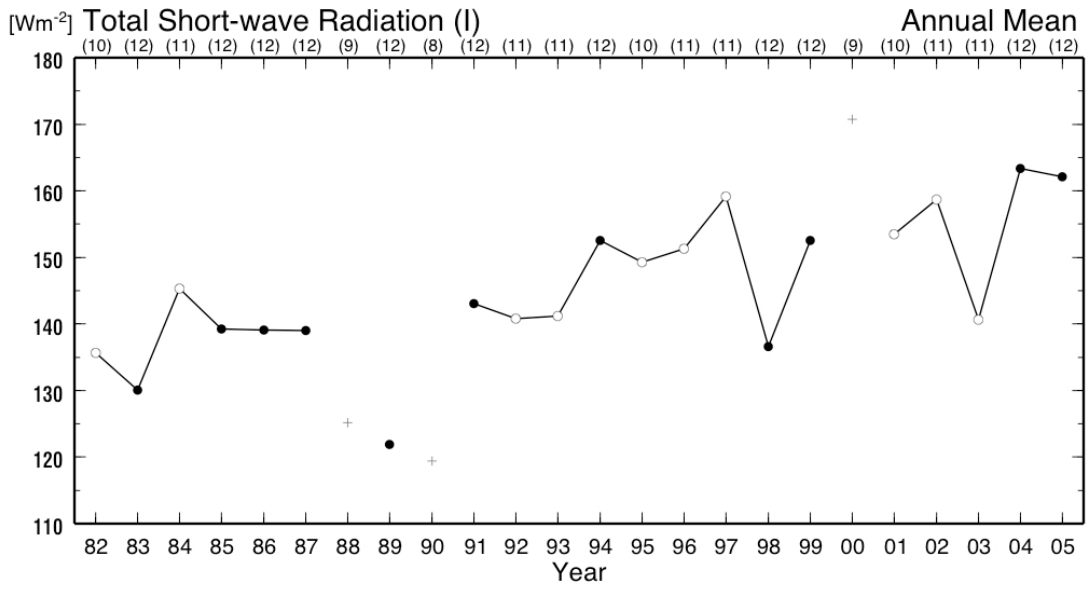
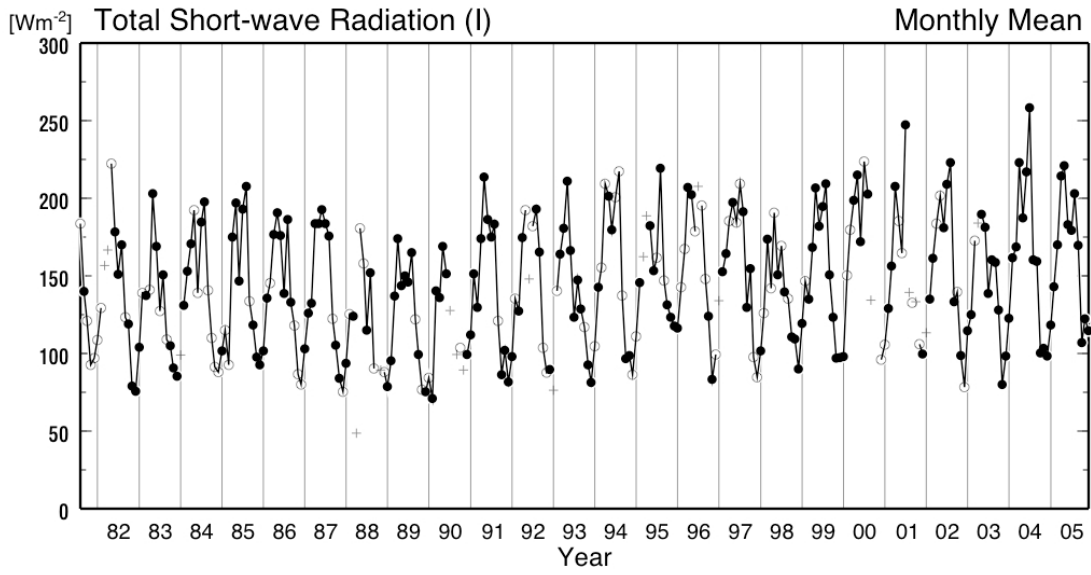
[Wm⁻²] Sensible Heat Flux 29.5 m (WT-3) Annual Mean



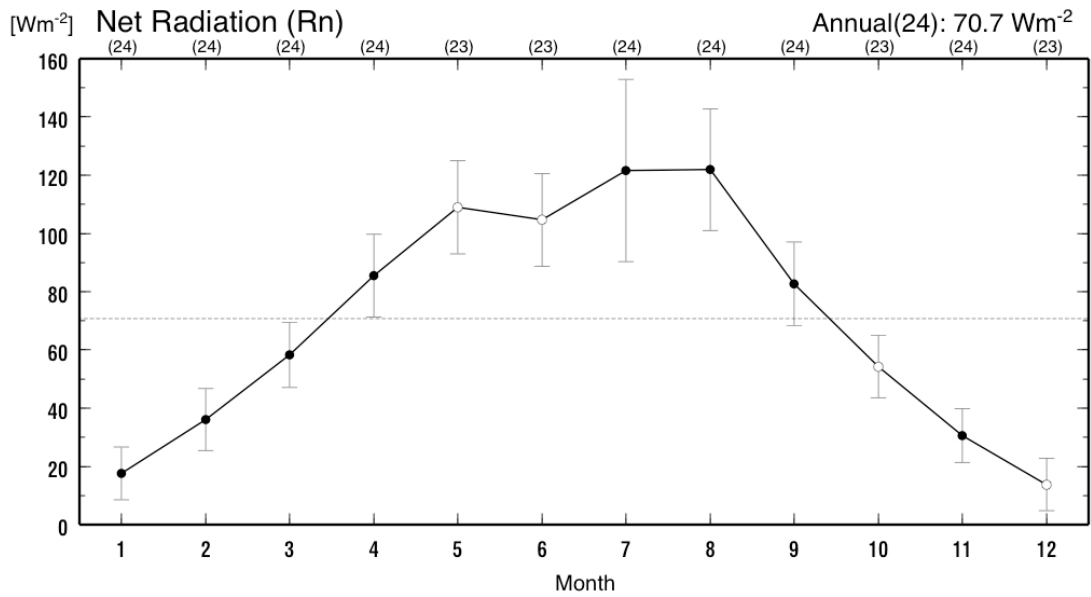
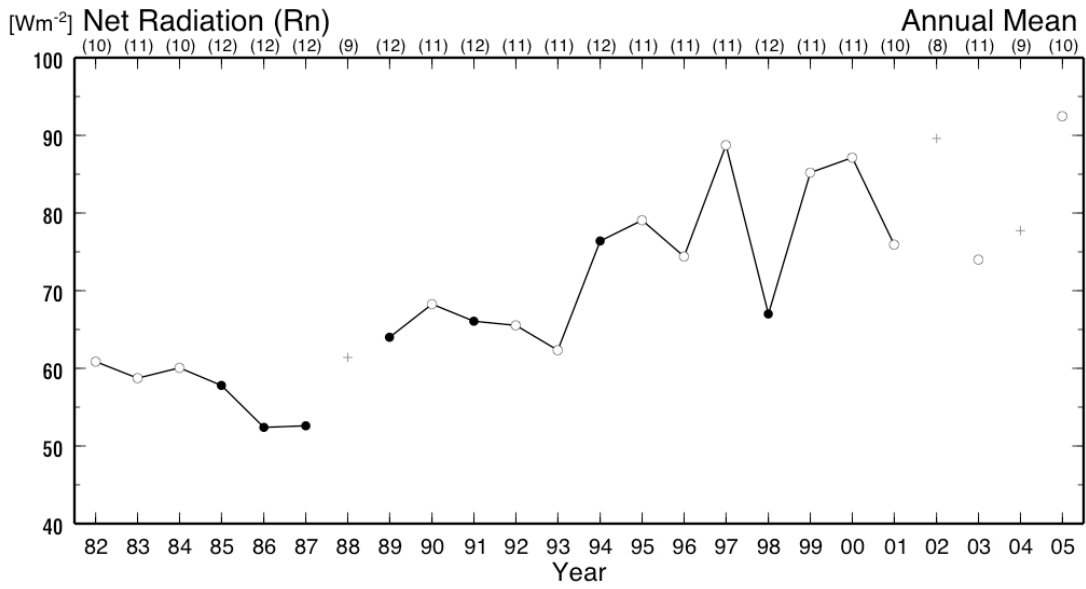
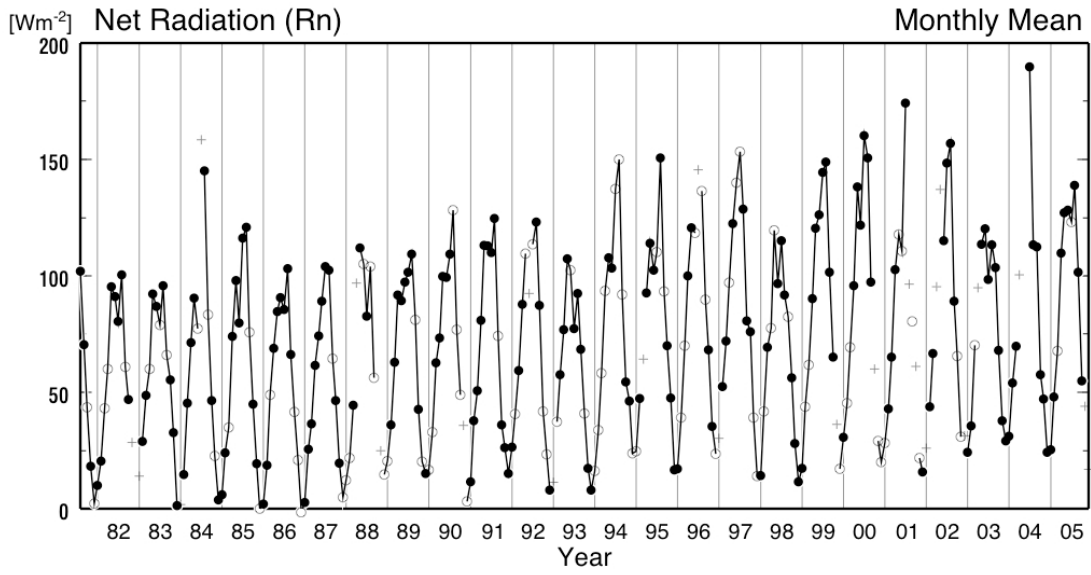
[Wm⁻²] Sensible Heat Flux 29.5 m (WT-3) Annual(11): 23.4 Wm⁻²



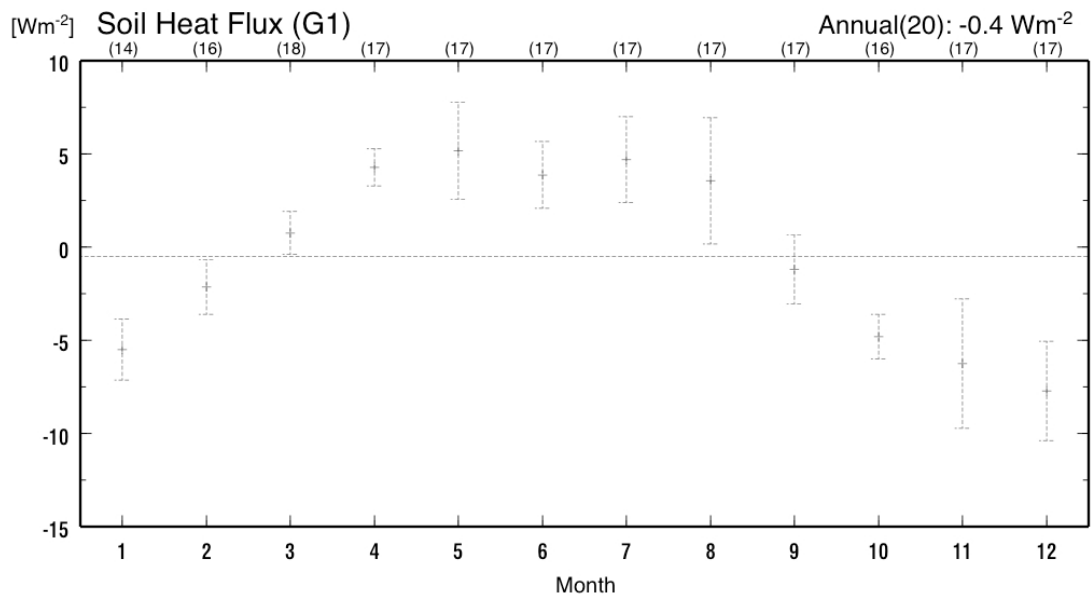
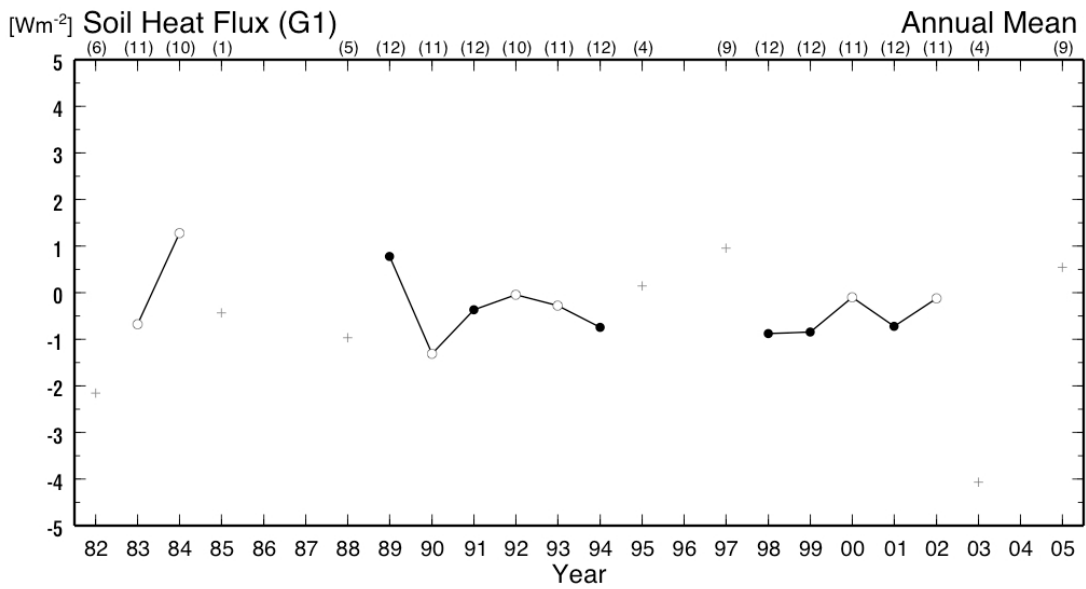
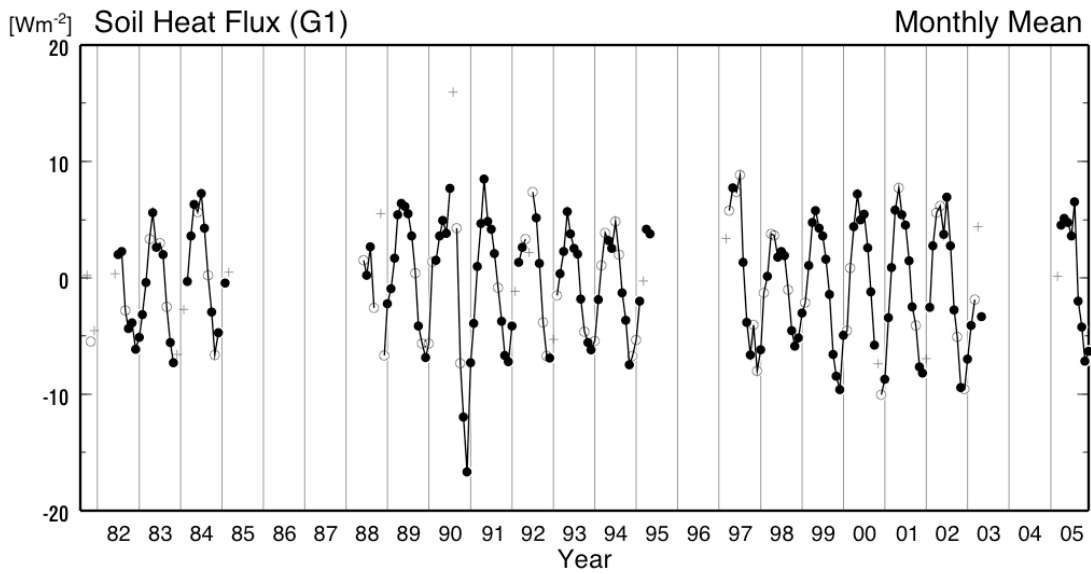
・ 全天短波放射量 (I)



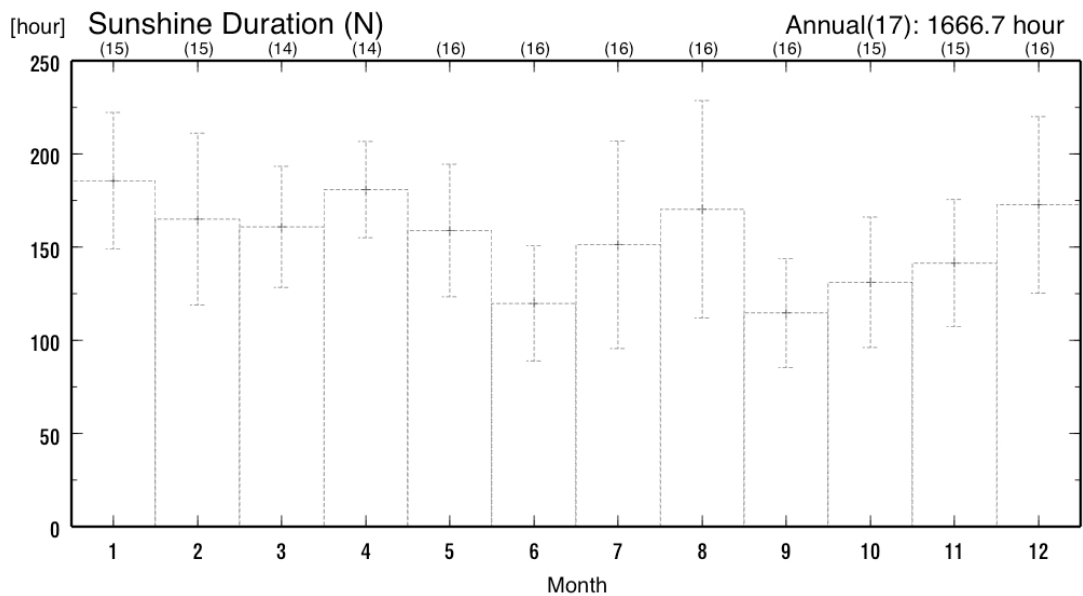
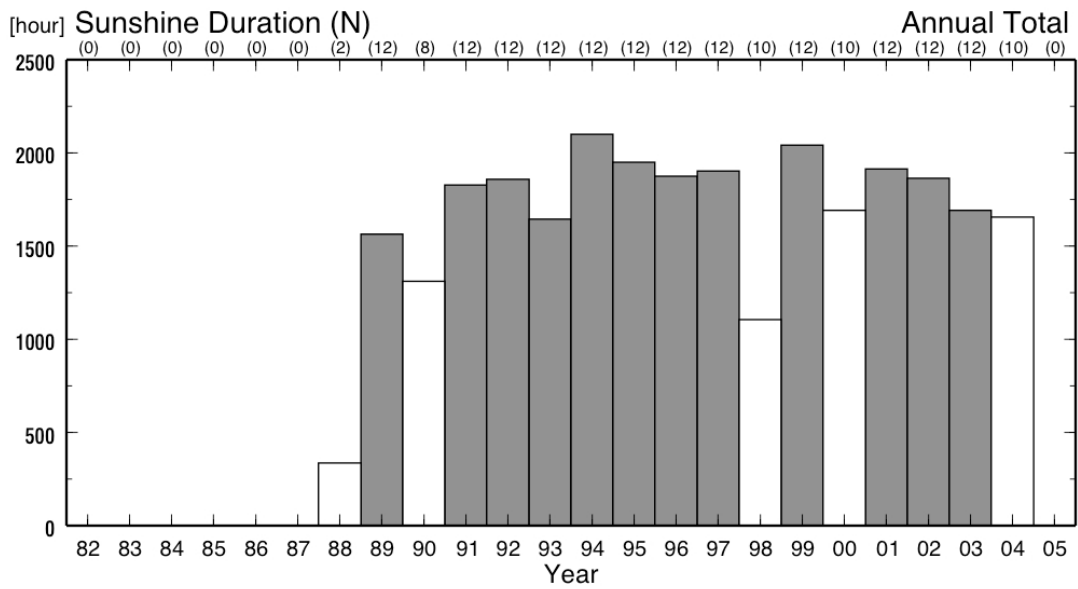
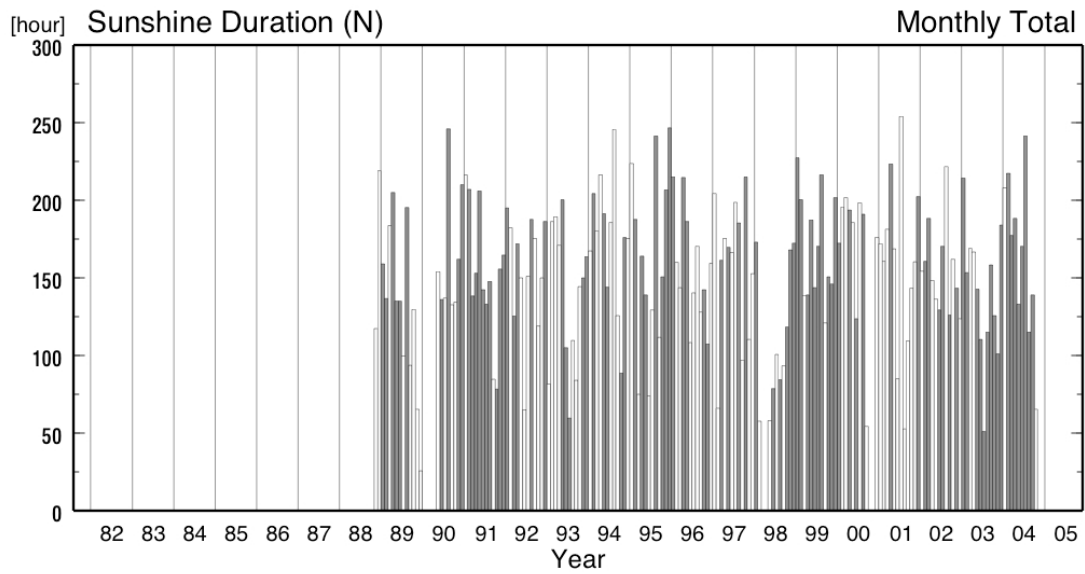
・ 正味放射量 (Rn)



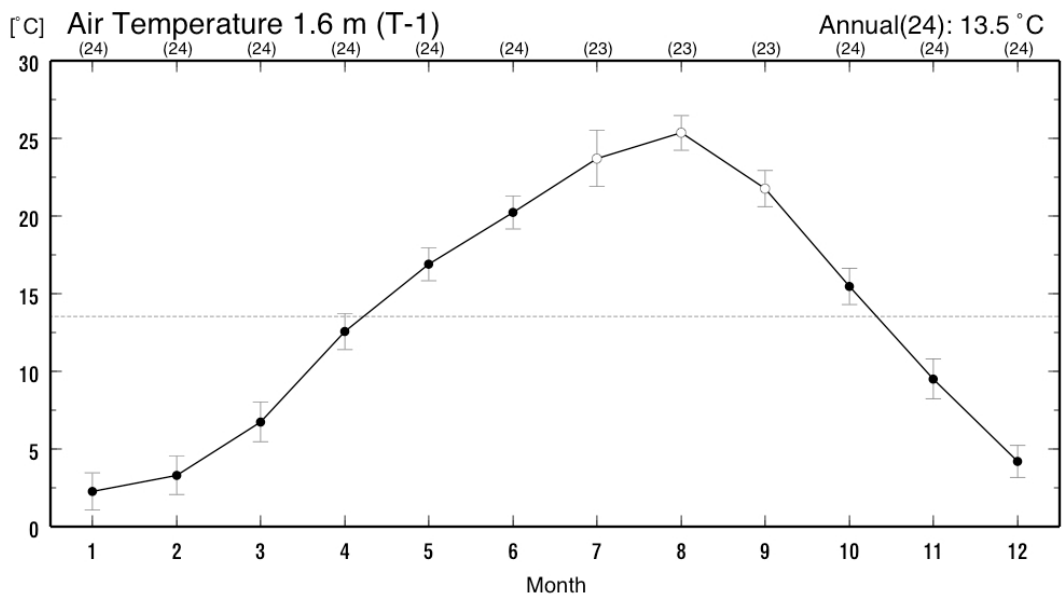
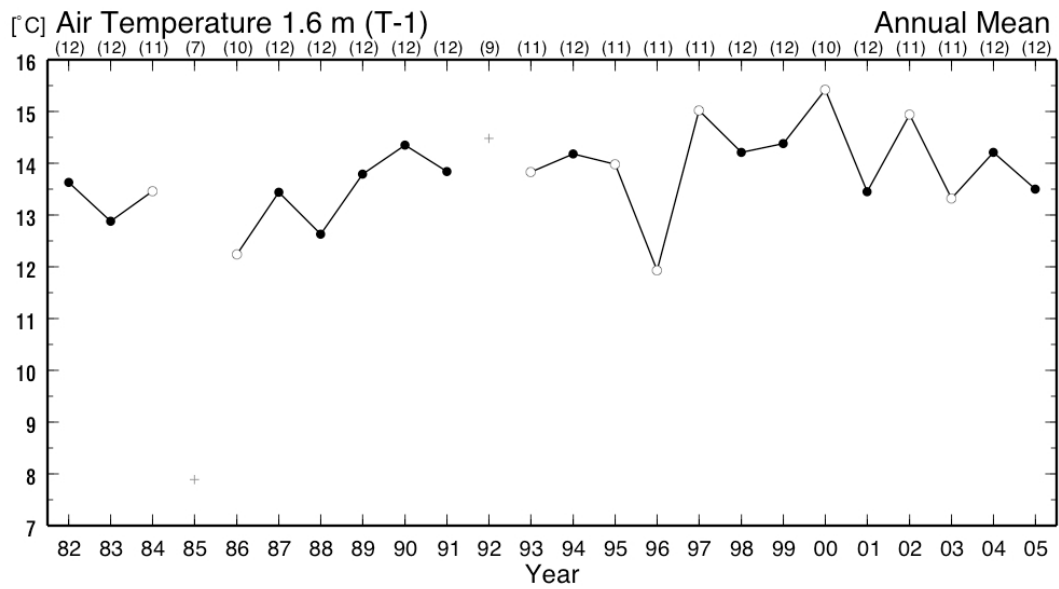
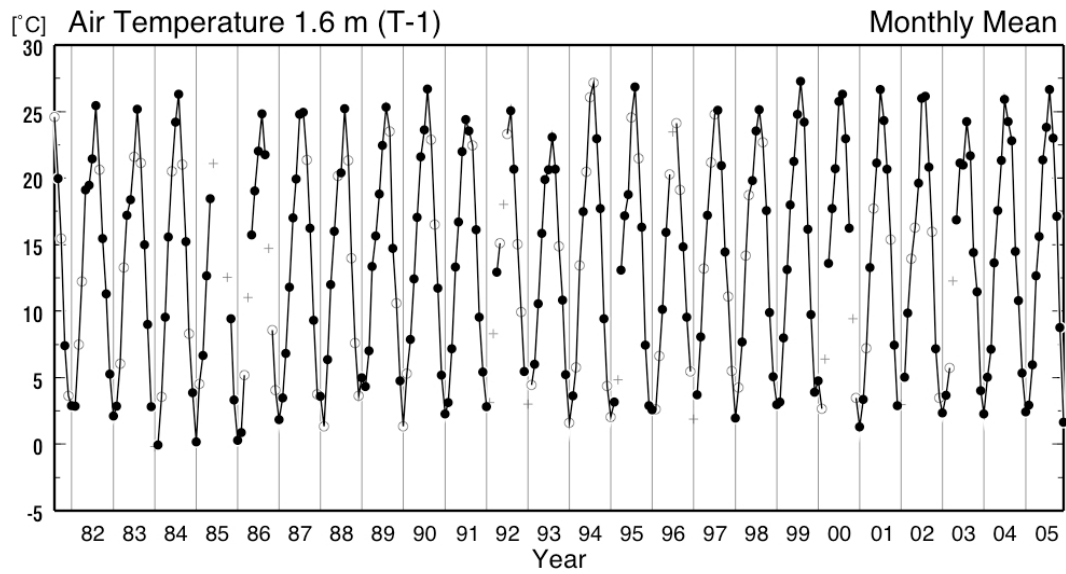
・ 地中熱流量 (G1)



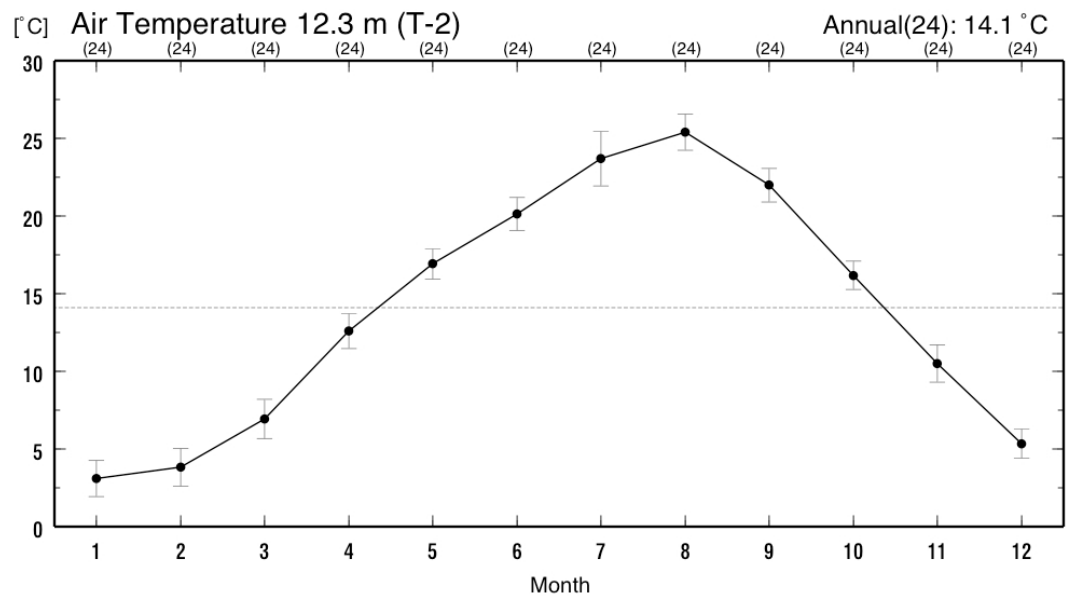
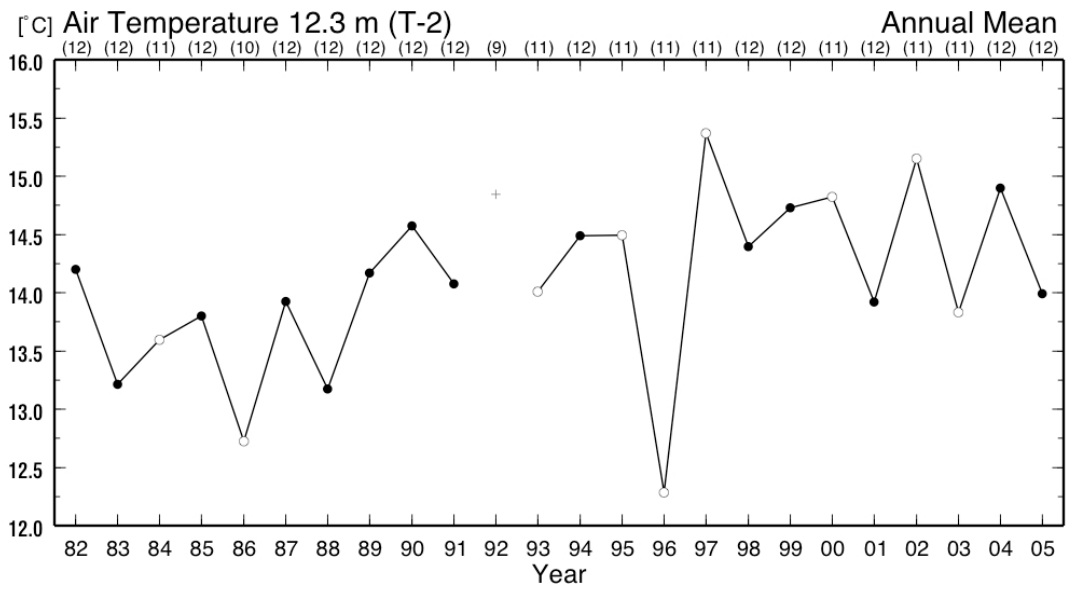
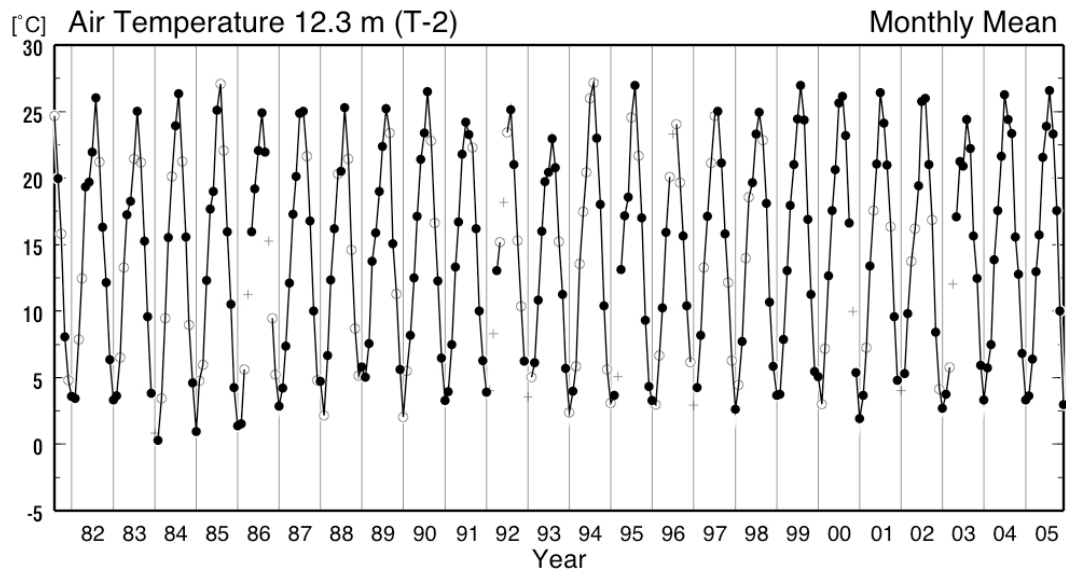
・日照時間 (N)



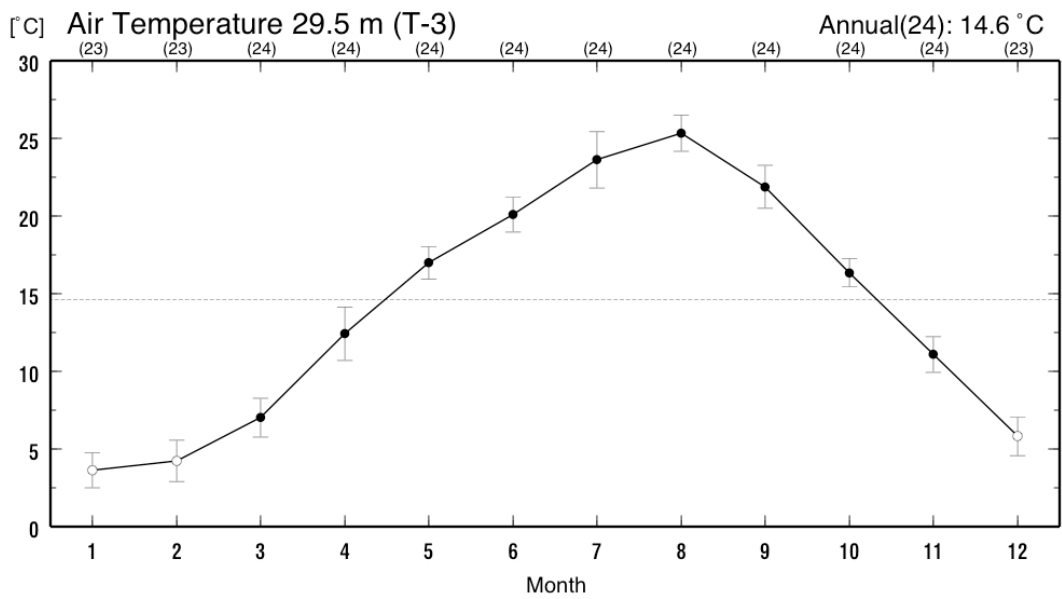
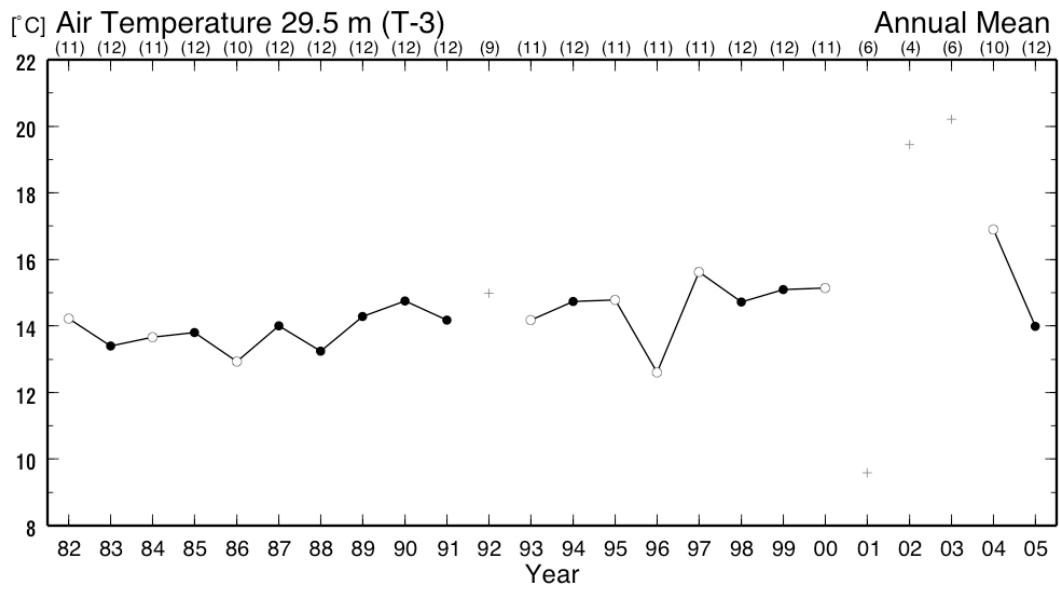
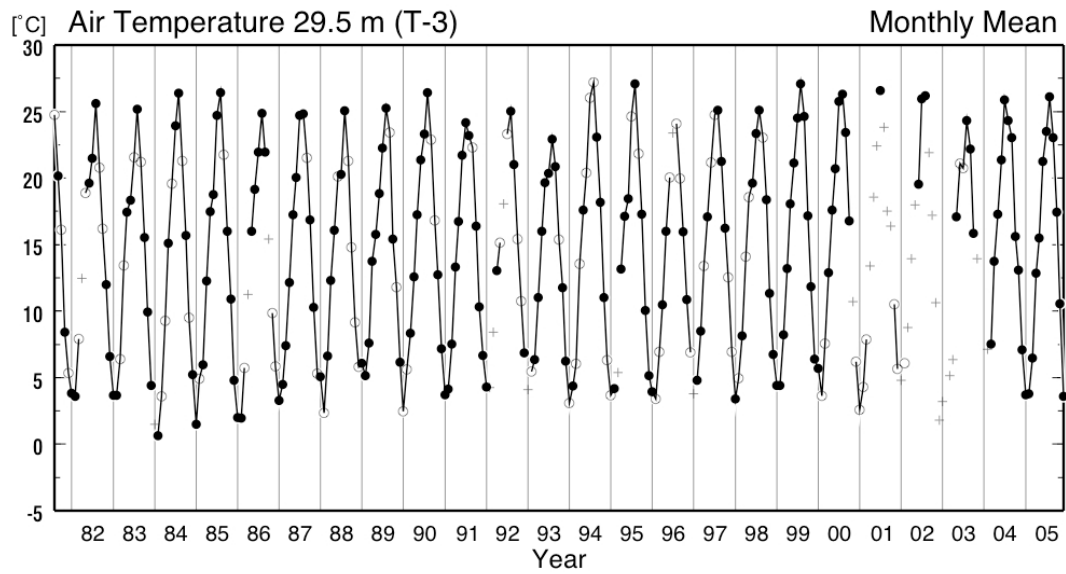
・ 気温 1.6 m (T-1)



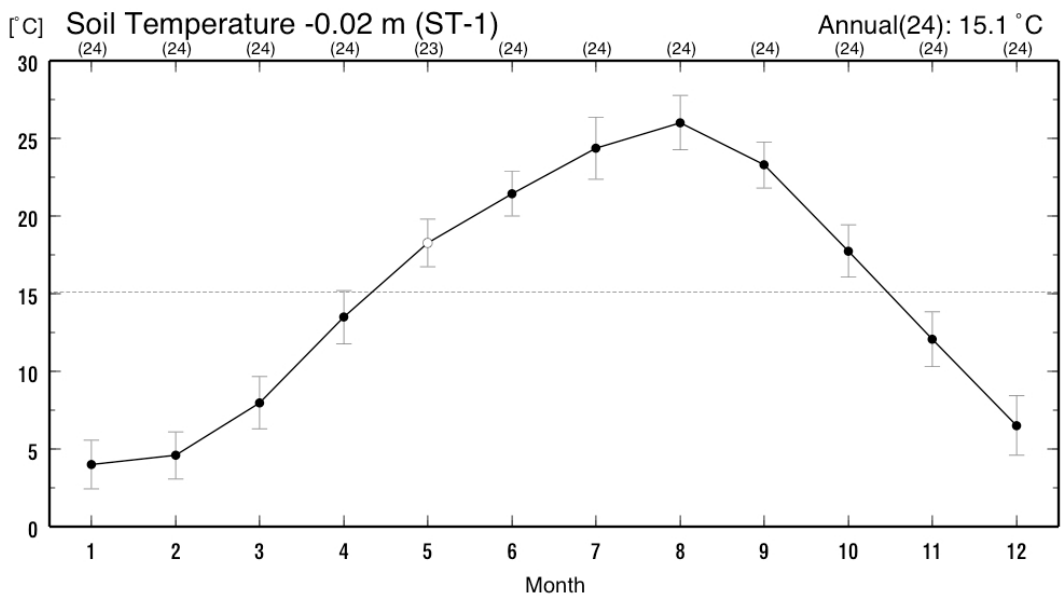
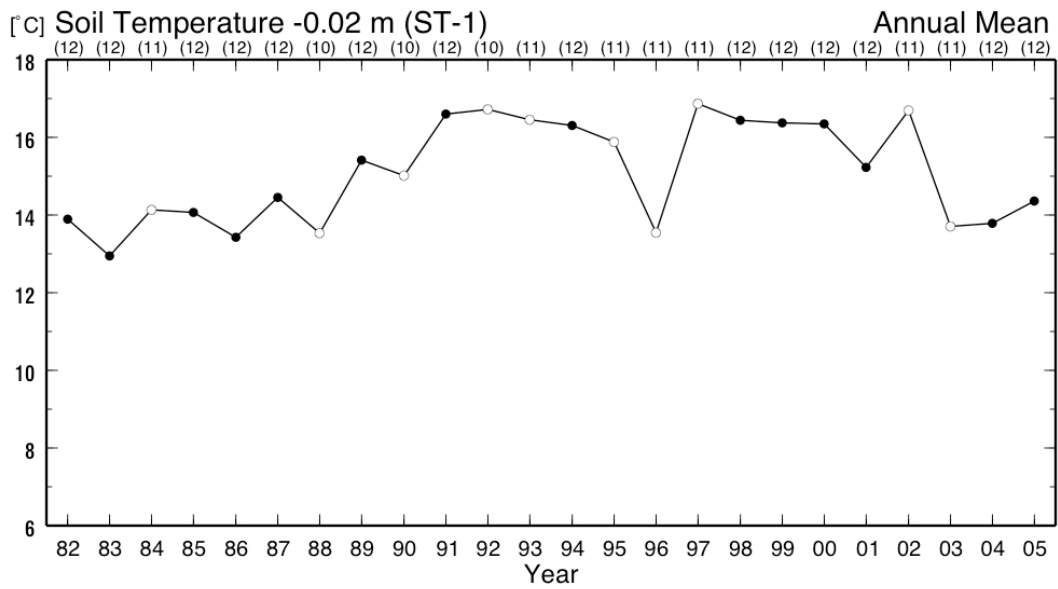
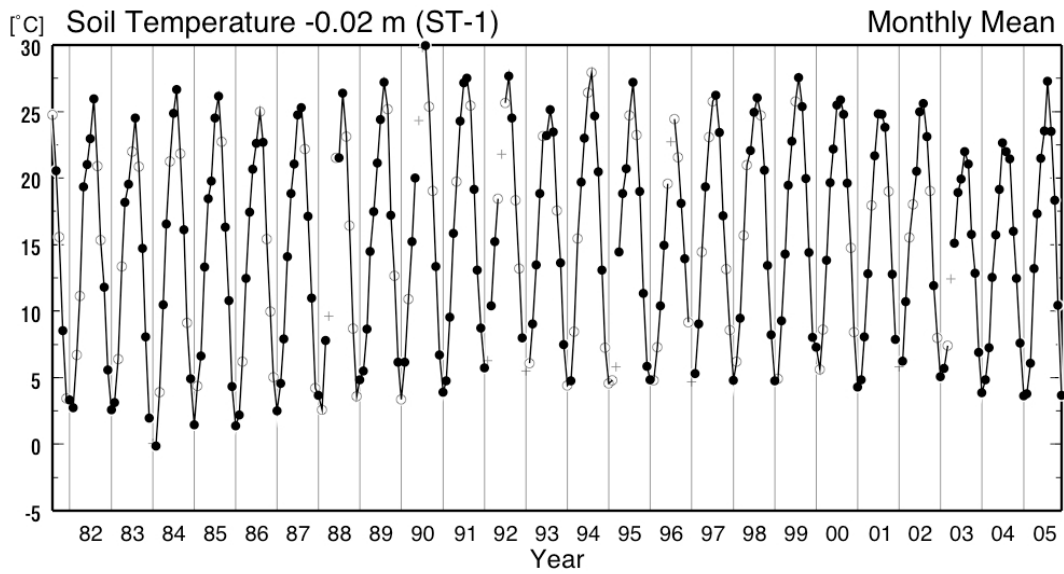
・ 気温 12.3 m (T-2)



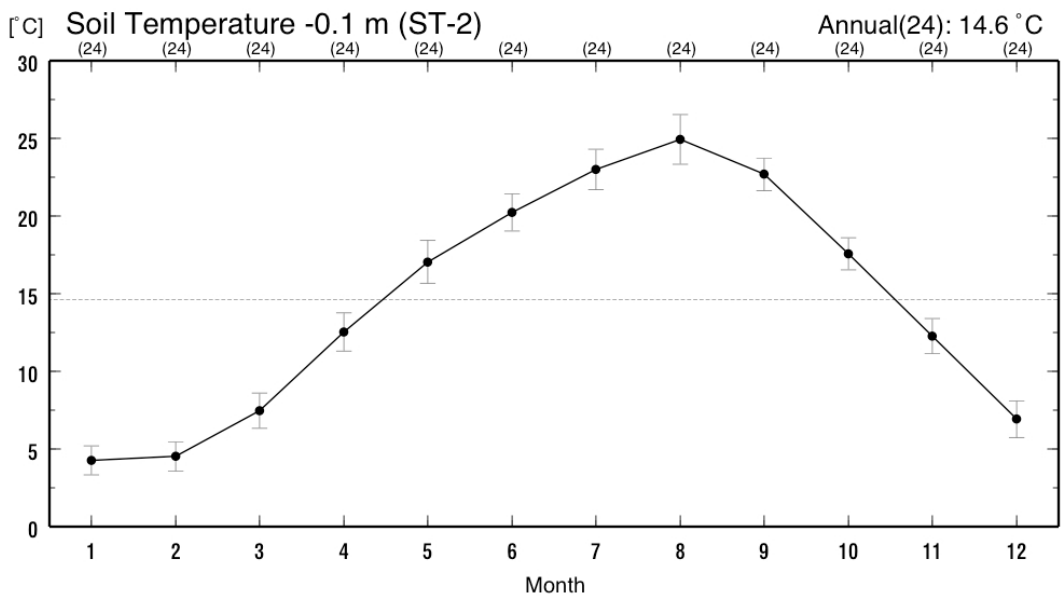
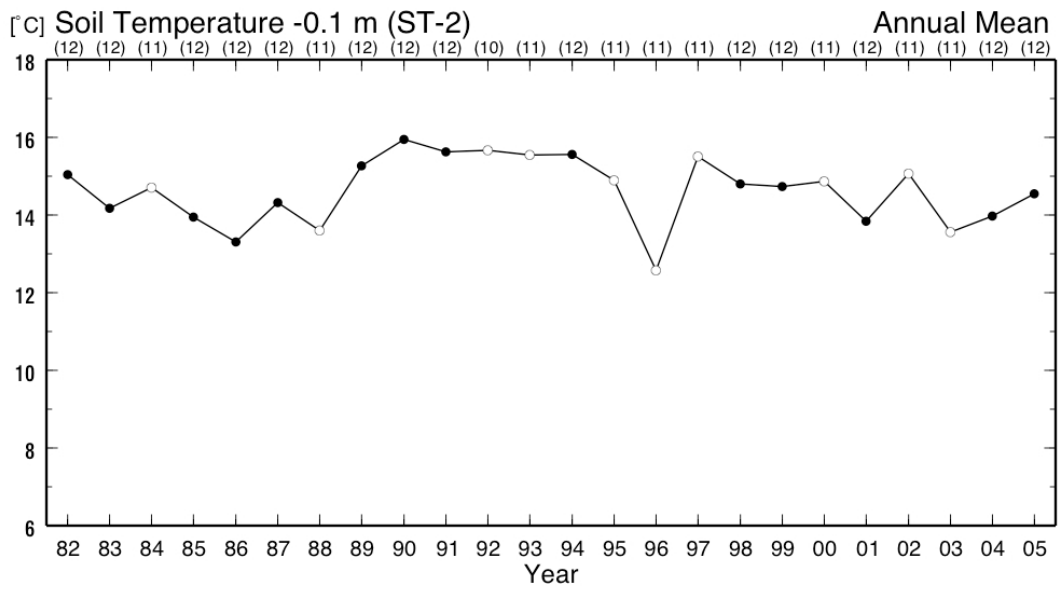
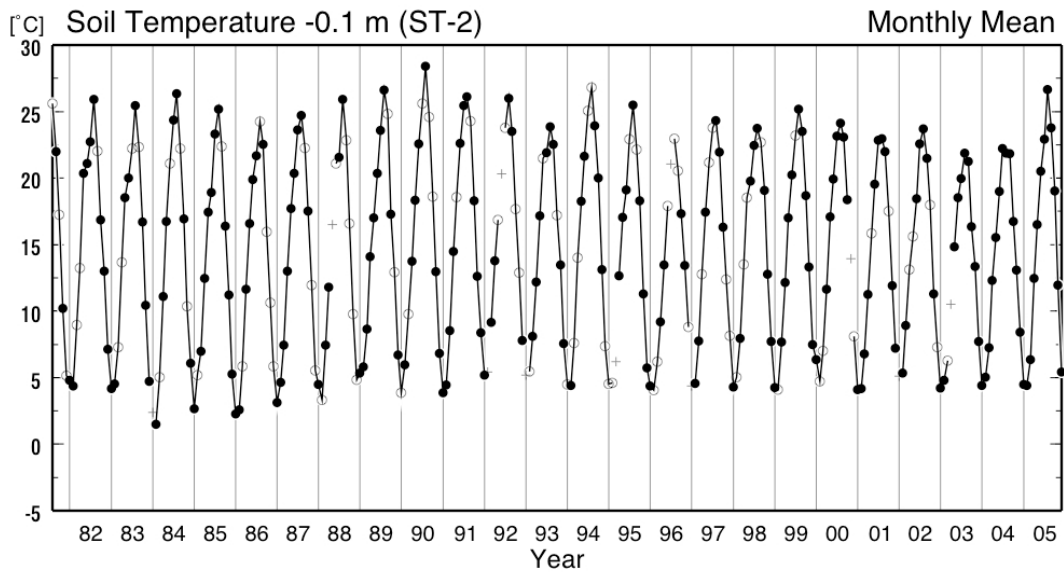
・ 気温 29.5 m (T-3)



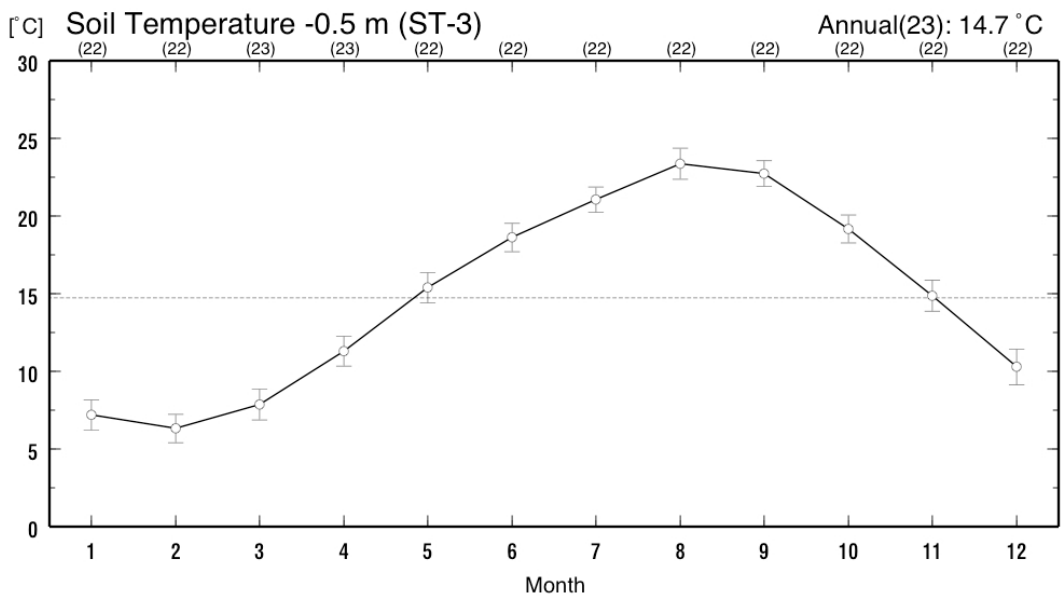
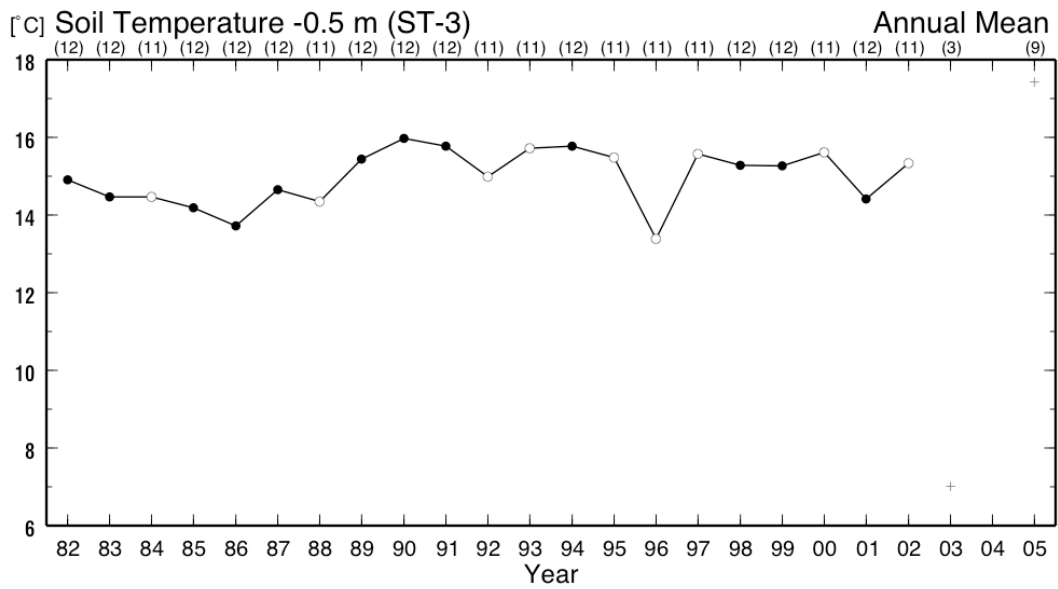
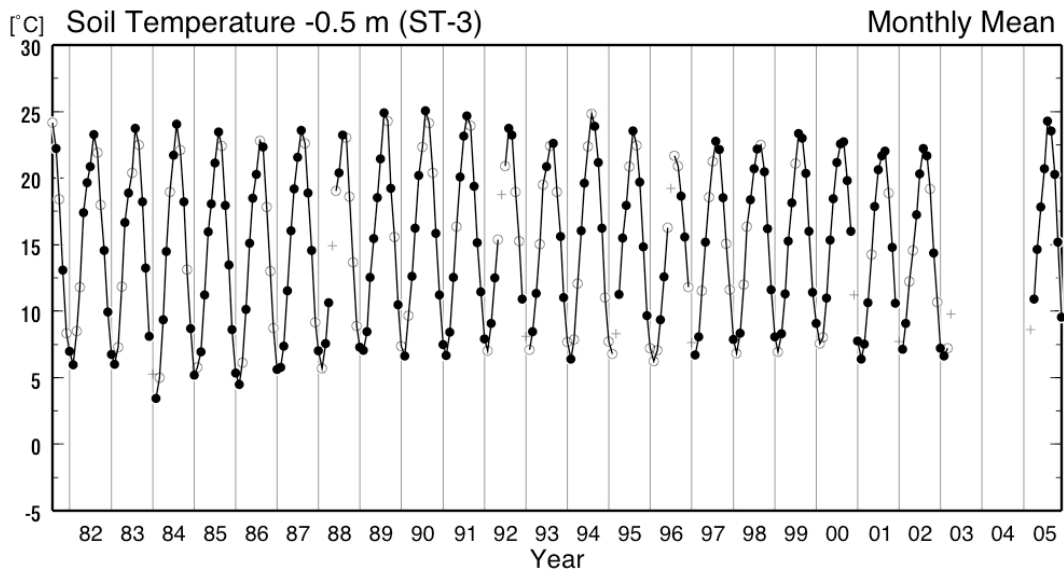
・地温 -0.02 m (ST-1)



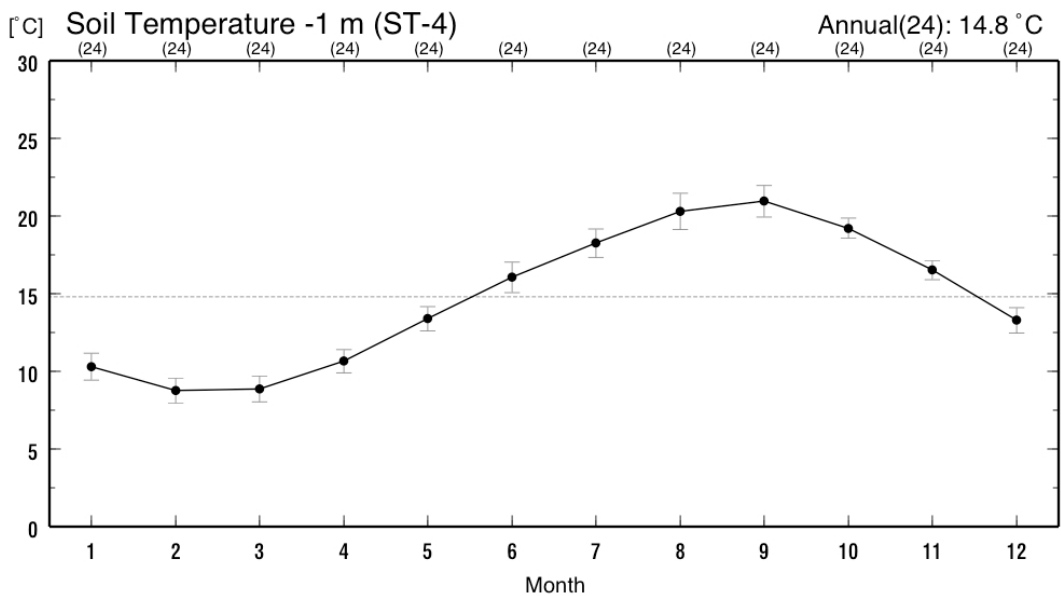
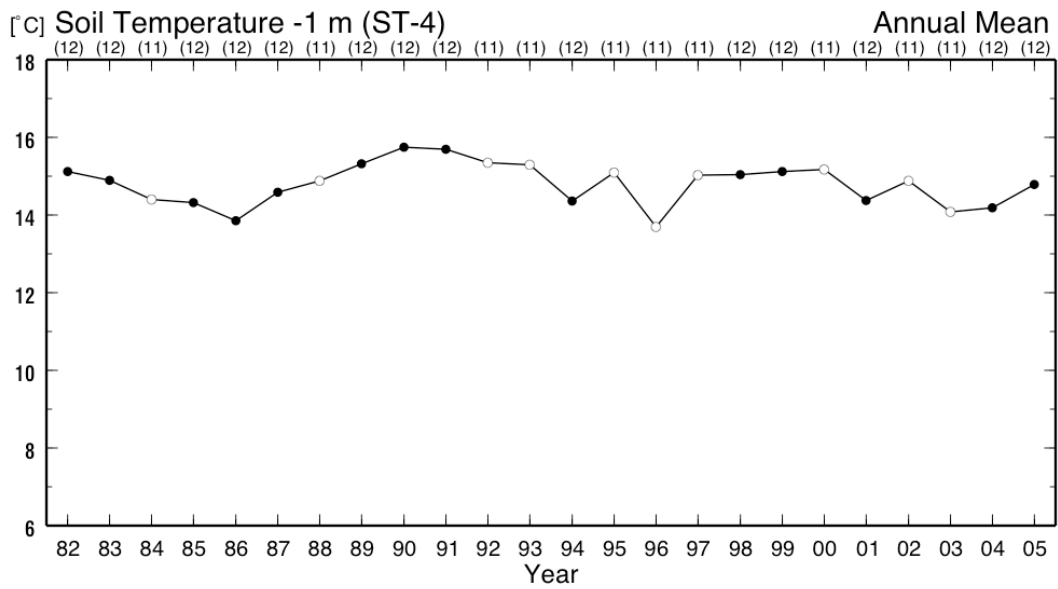
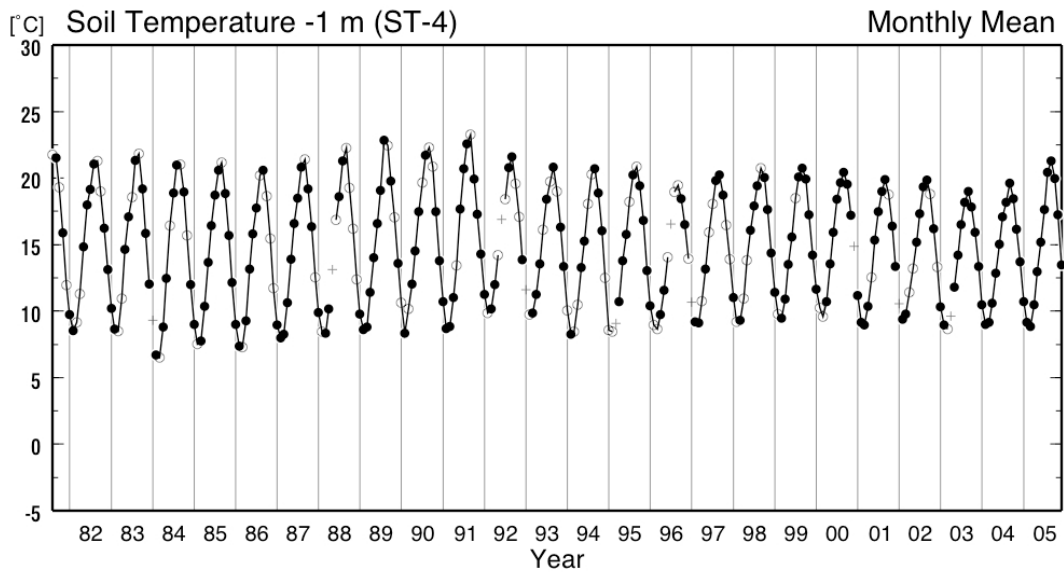
・地温 -0.1 m (ST-2)



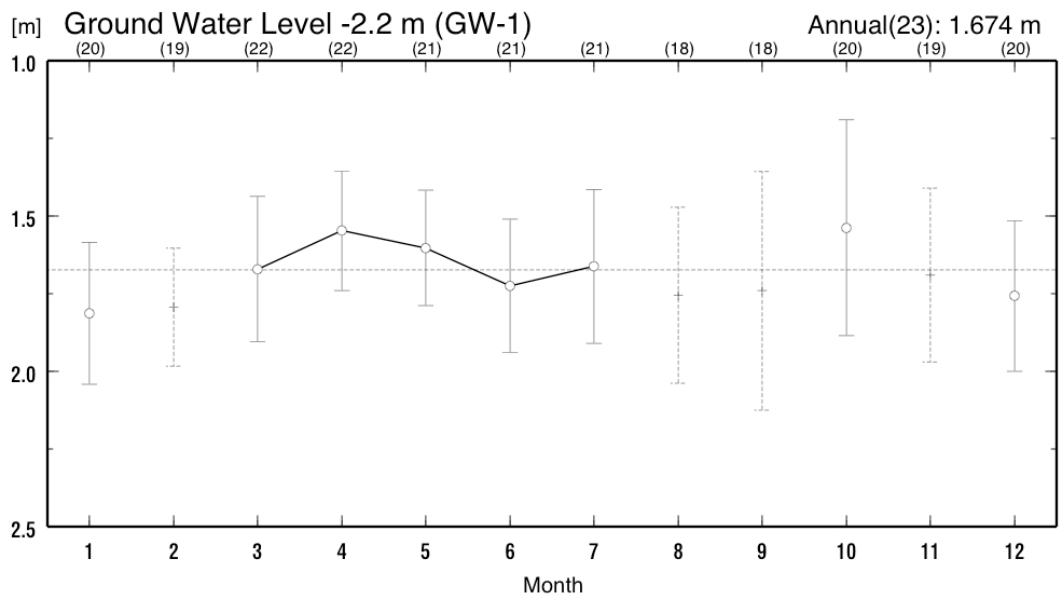
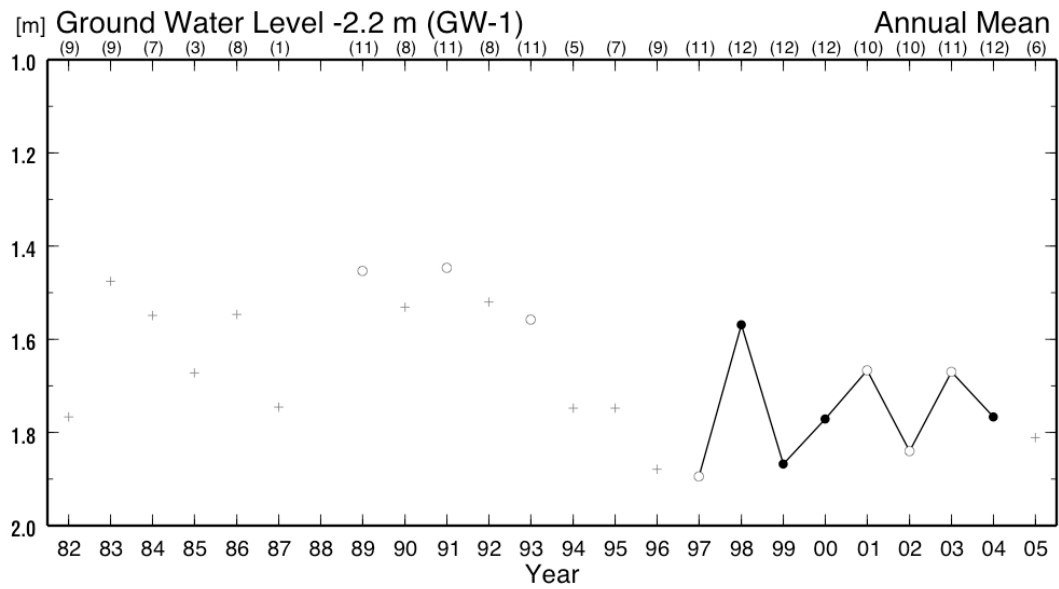
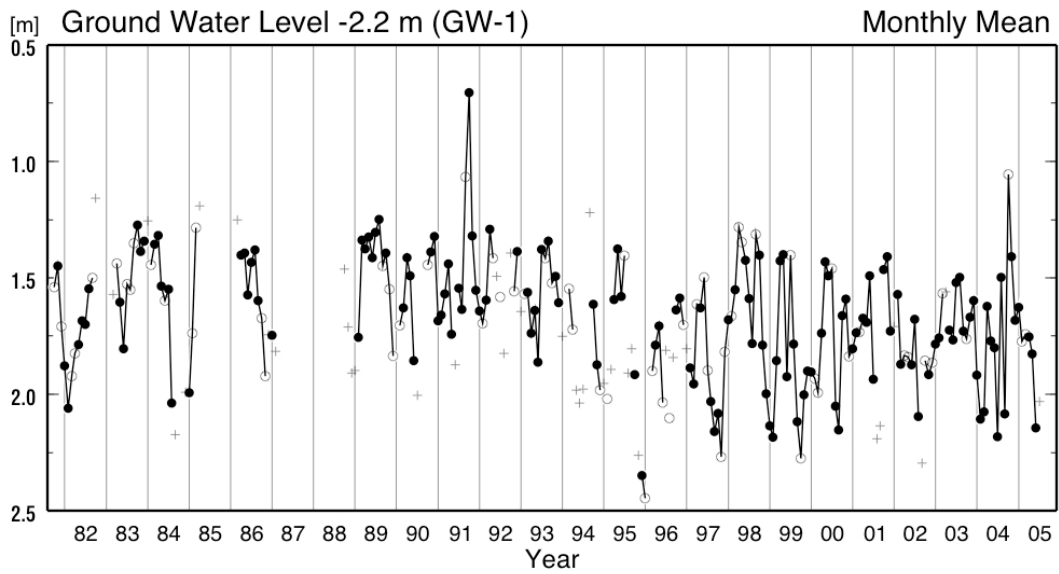
・地温 -0.5 m (ST-3)



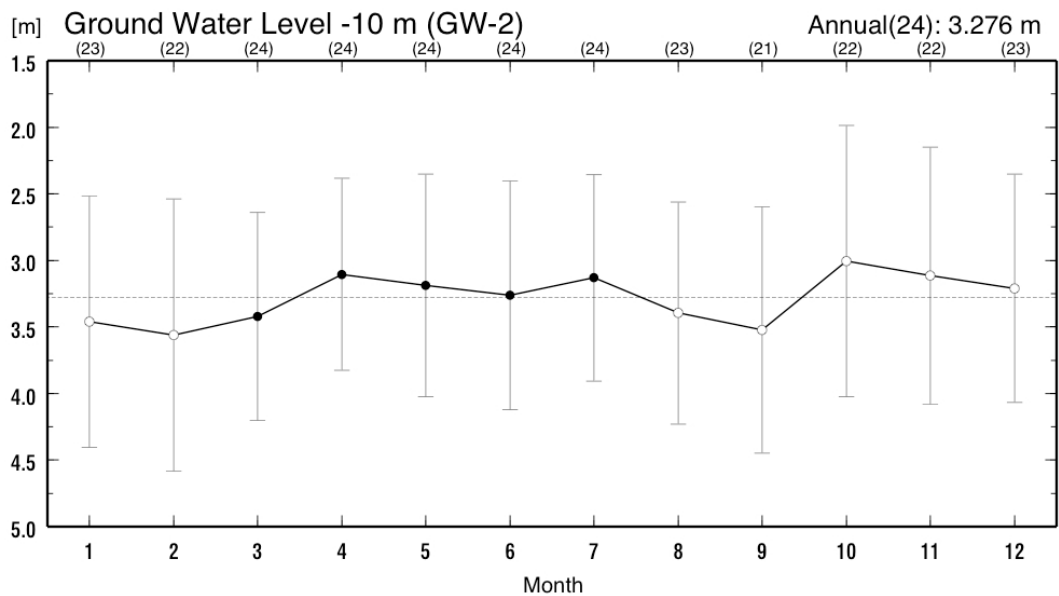
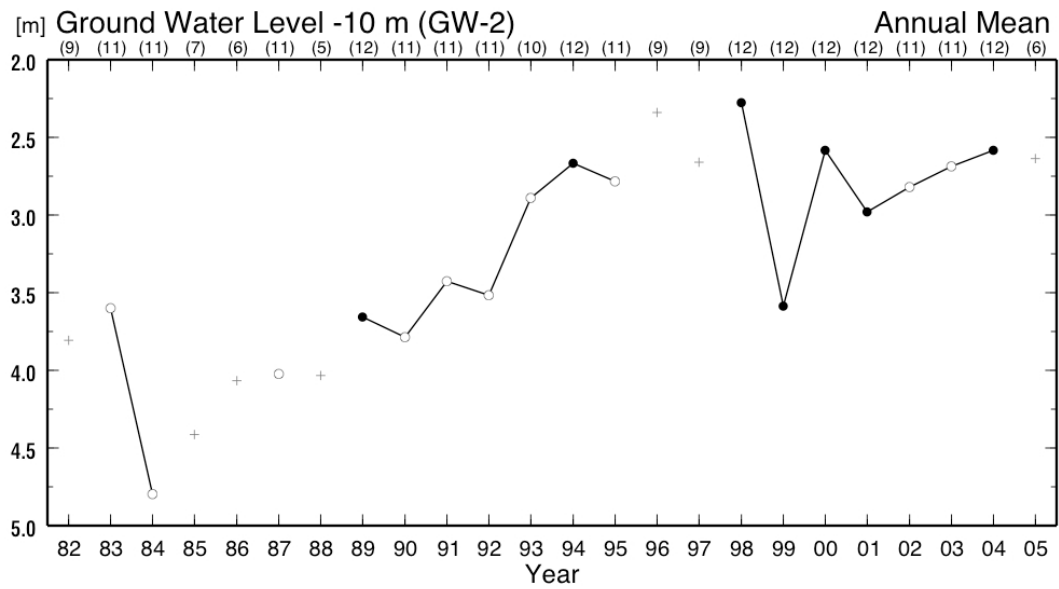
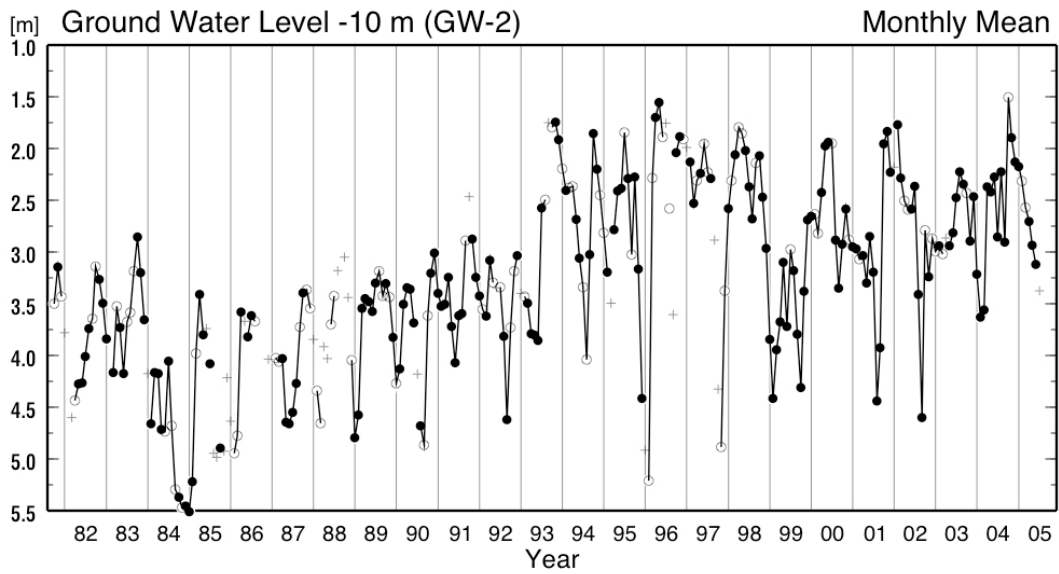
・地温 -1 m (ST-4)



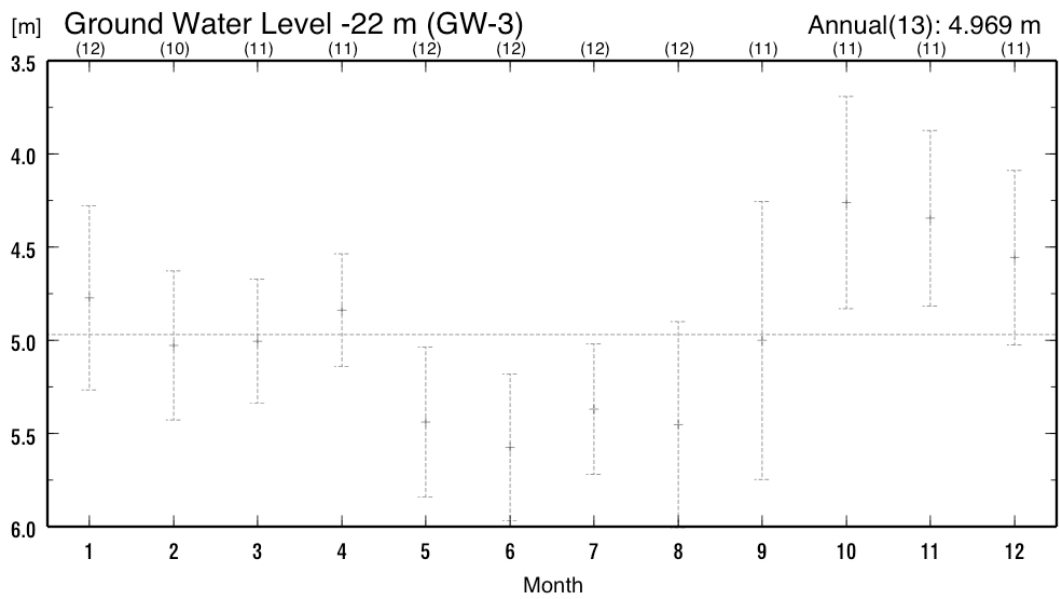
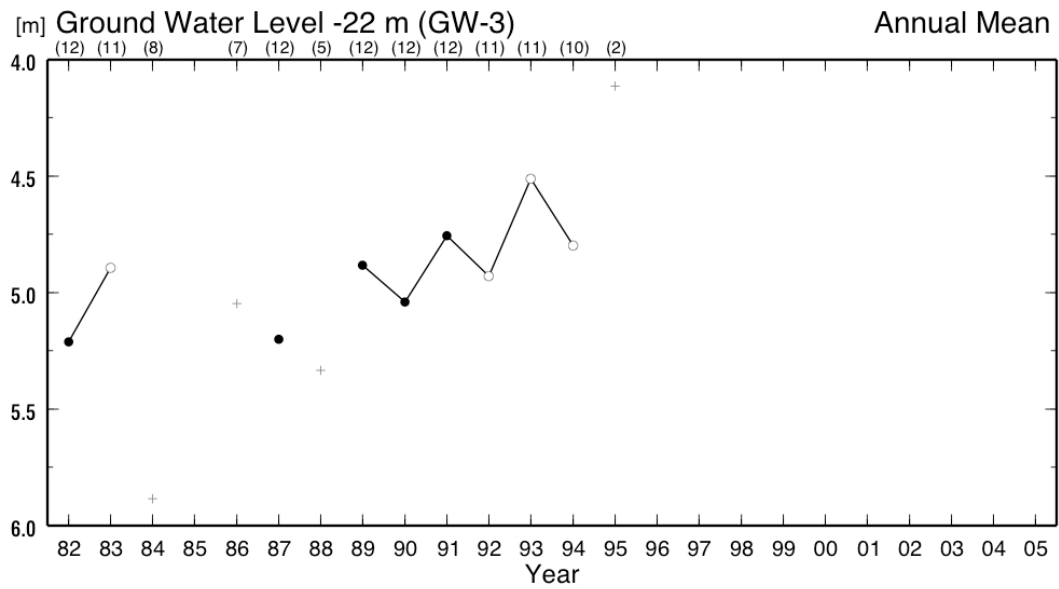
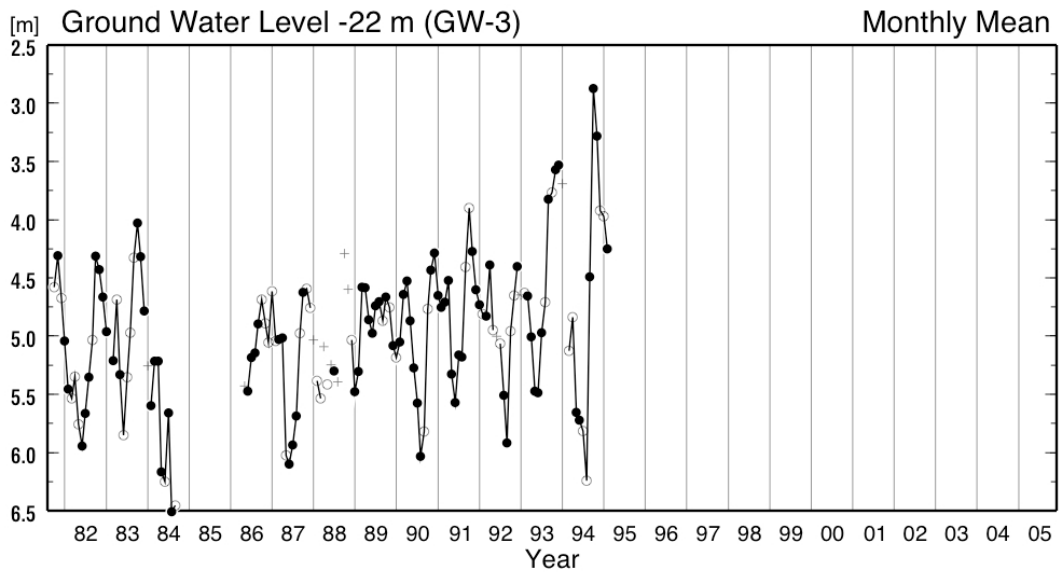
・ 地下水位 -2.2 m (GW-1)



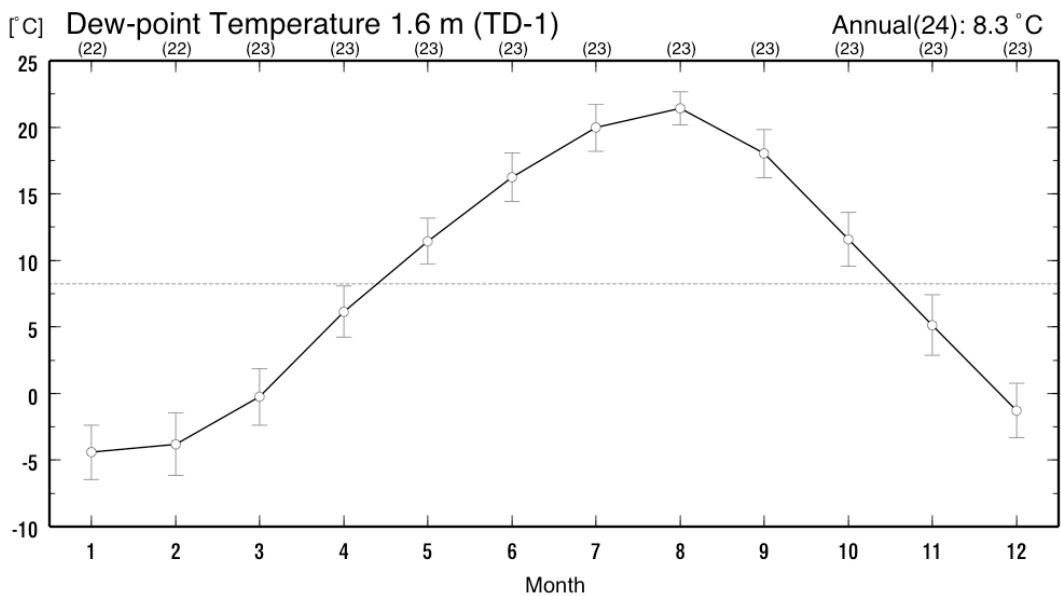
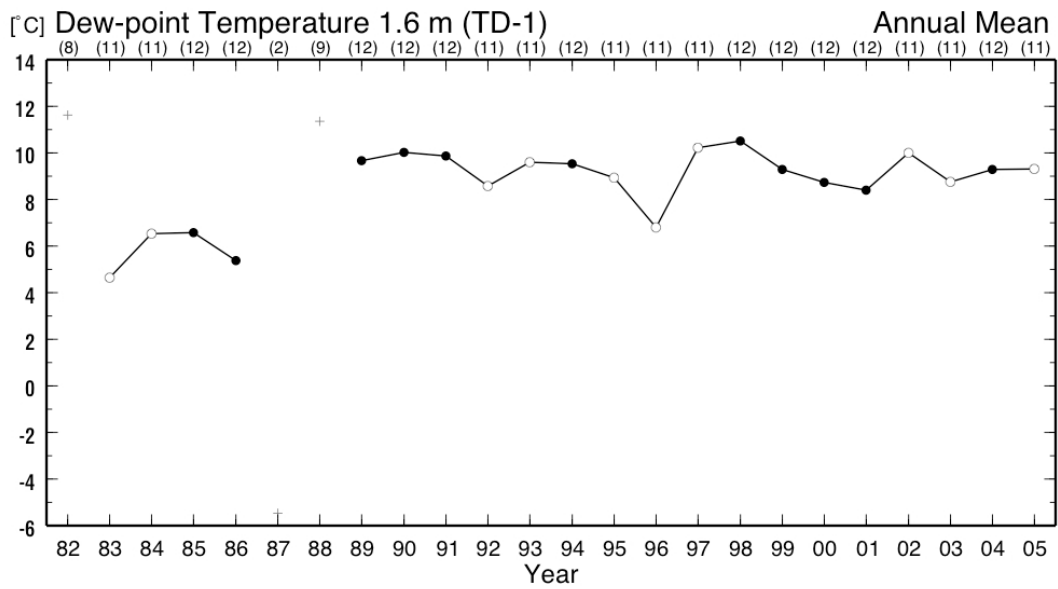
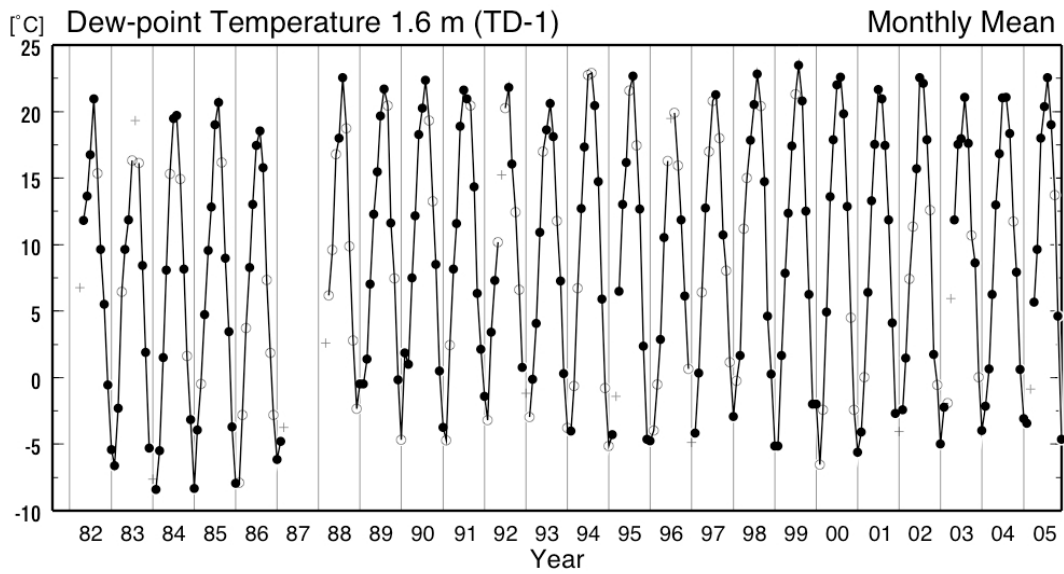
・ 地下水位 -10 m (GW-2)



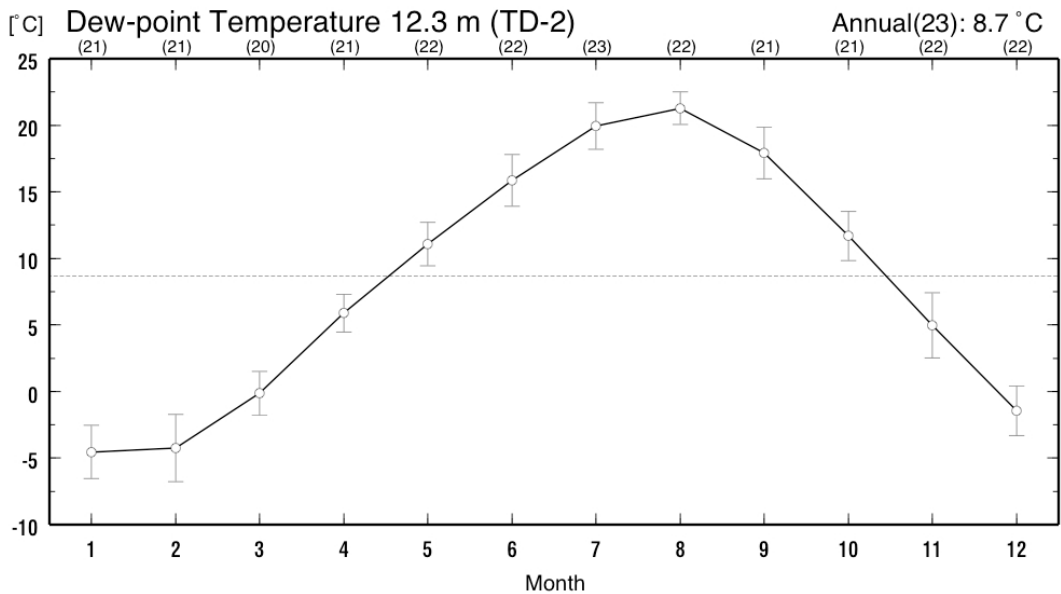
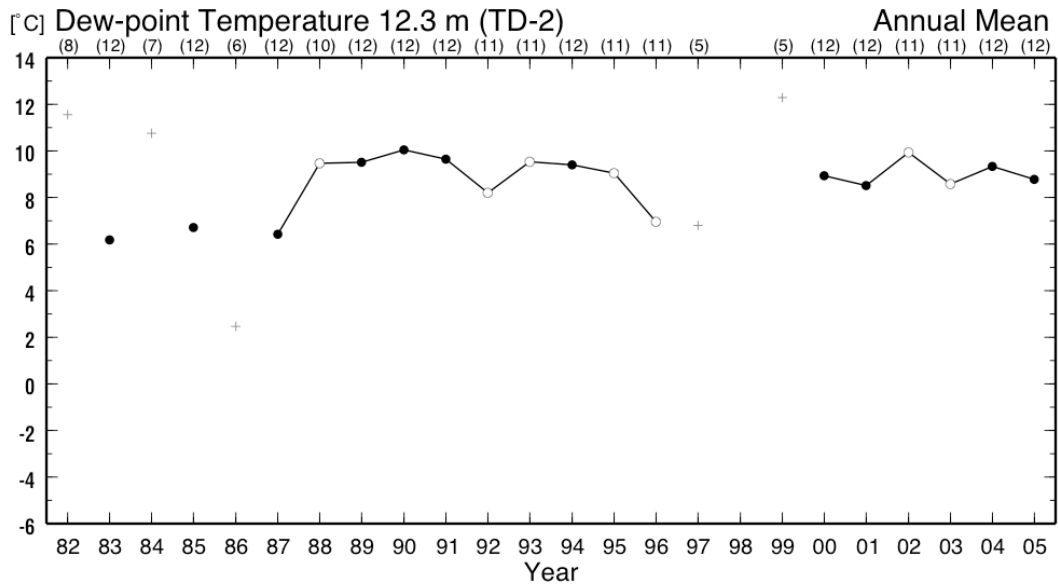
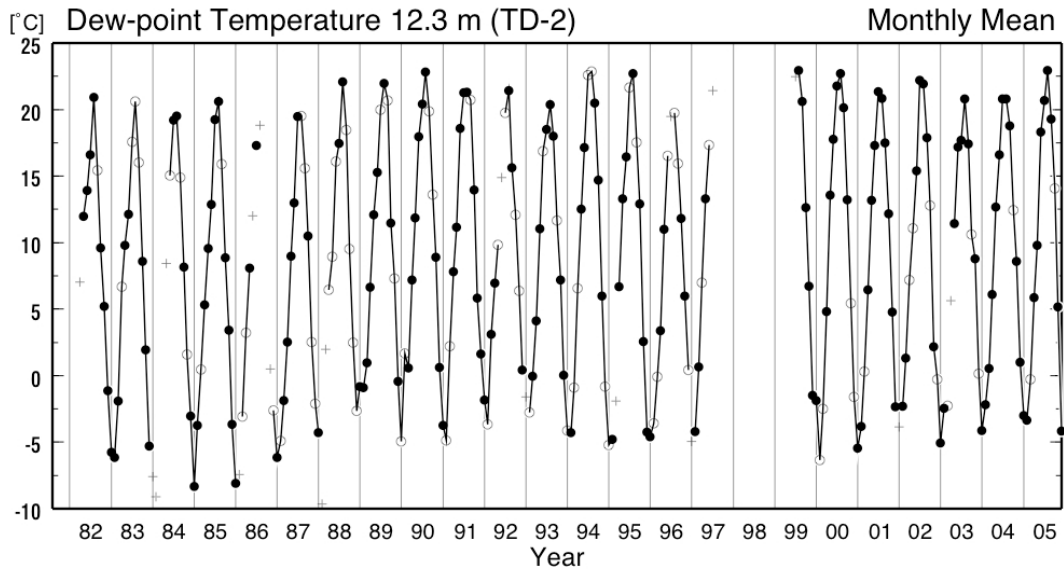
・ 地下水位 -22 m (GW-3)



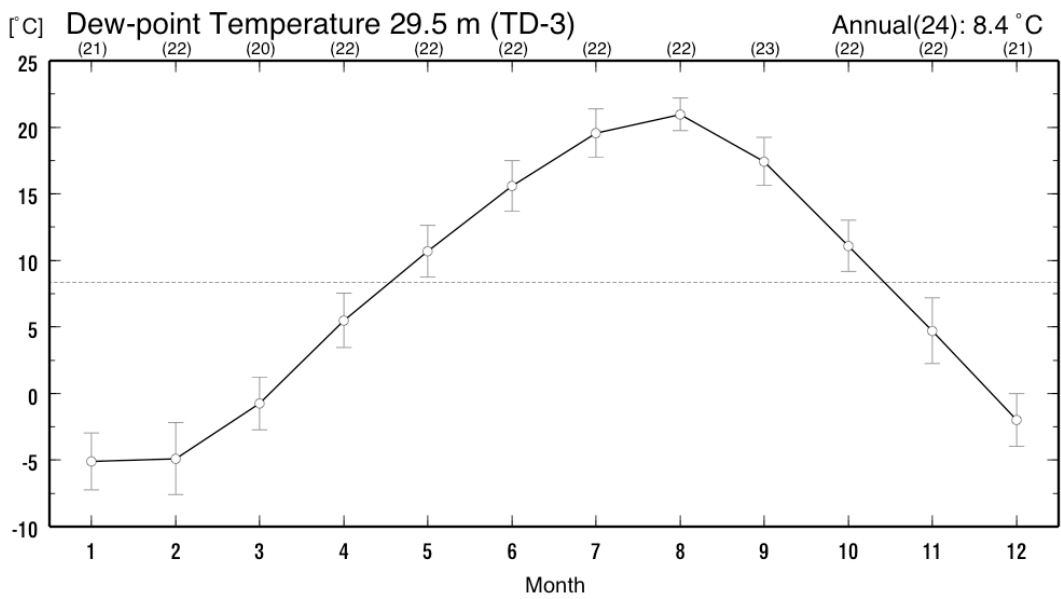
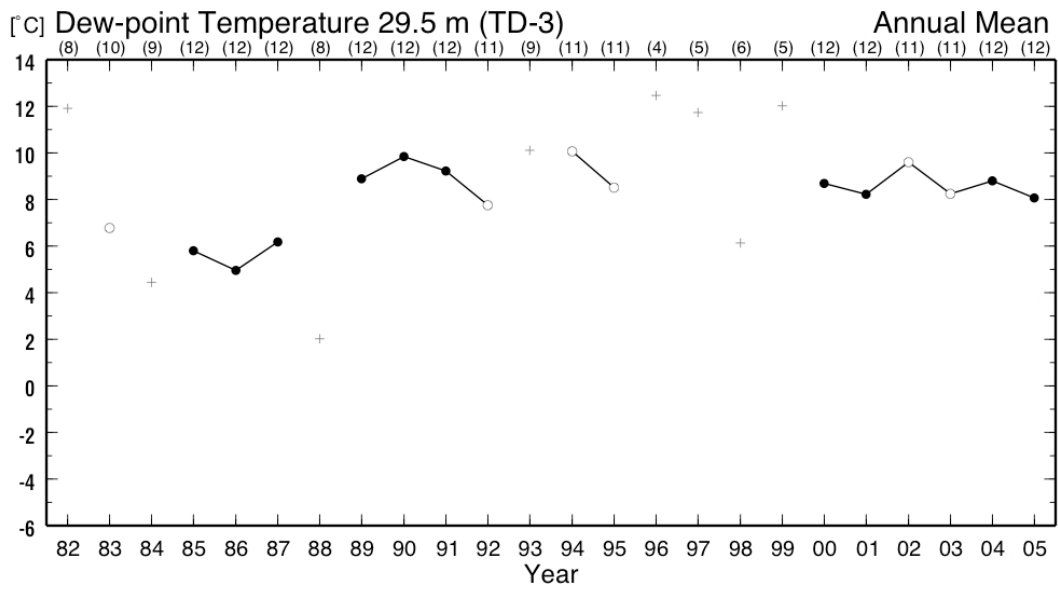
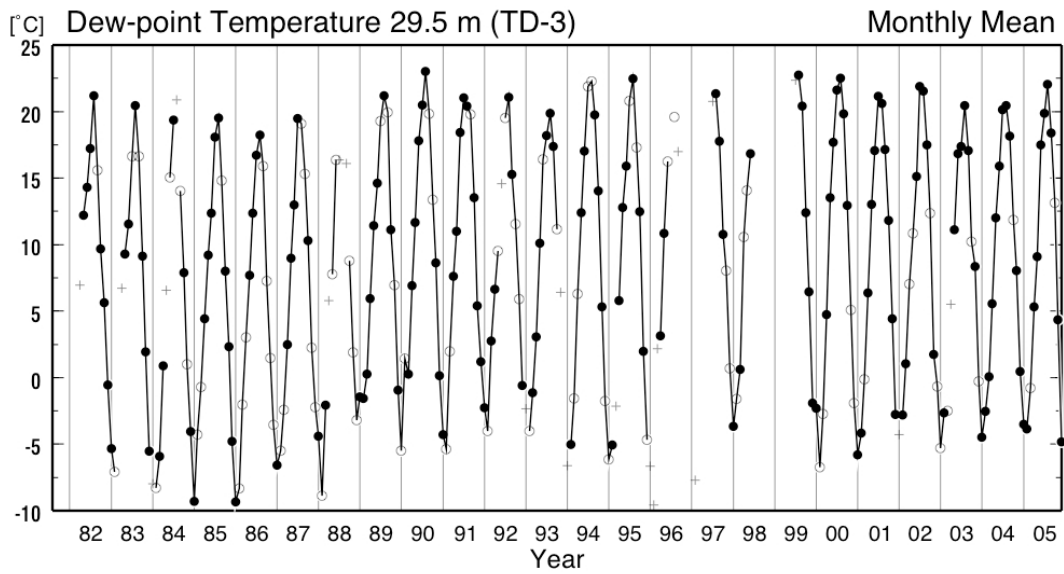
・ 露点温度 1.6 m (TD-1)



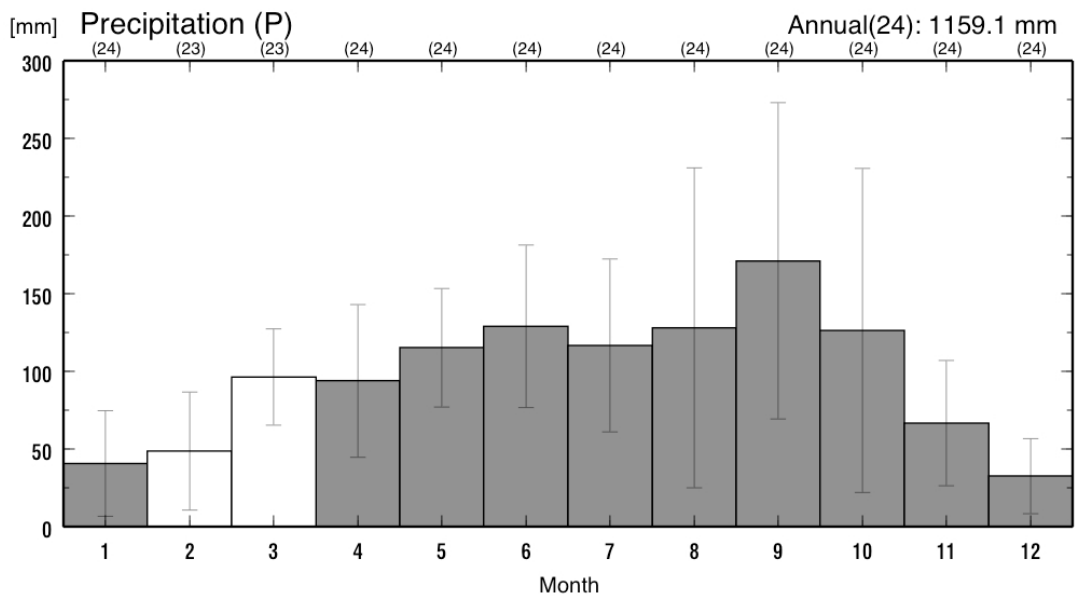
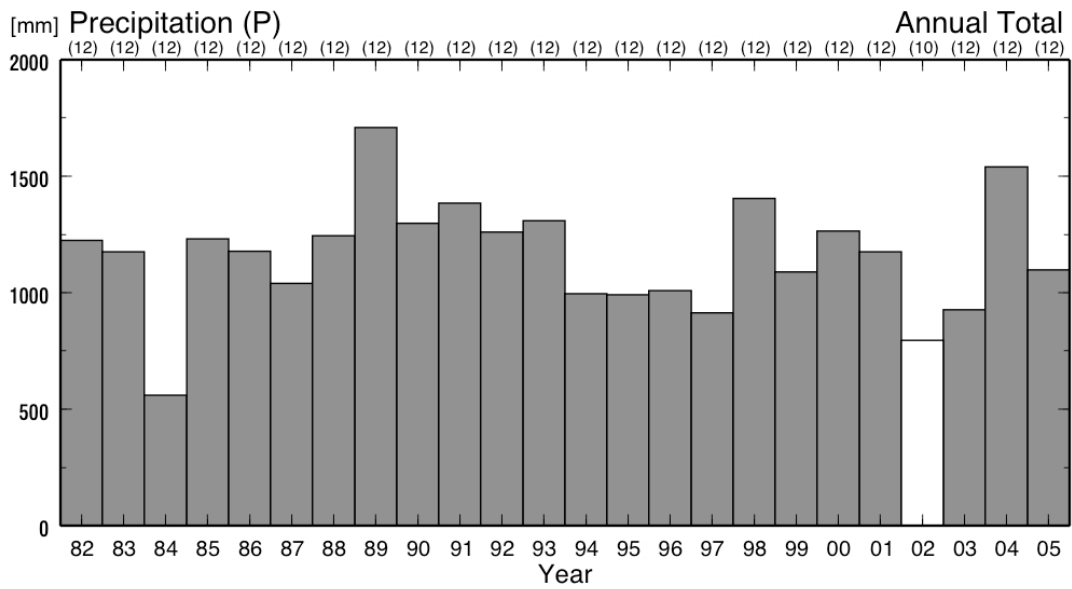
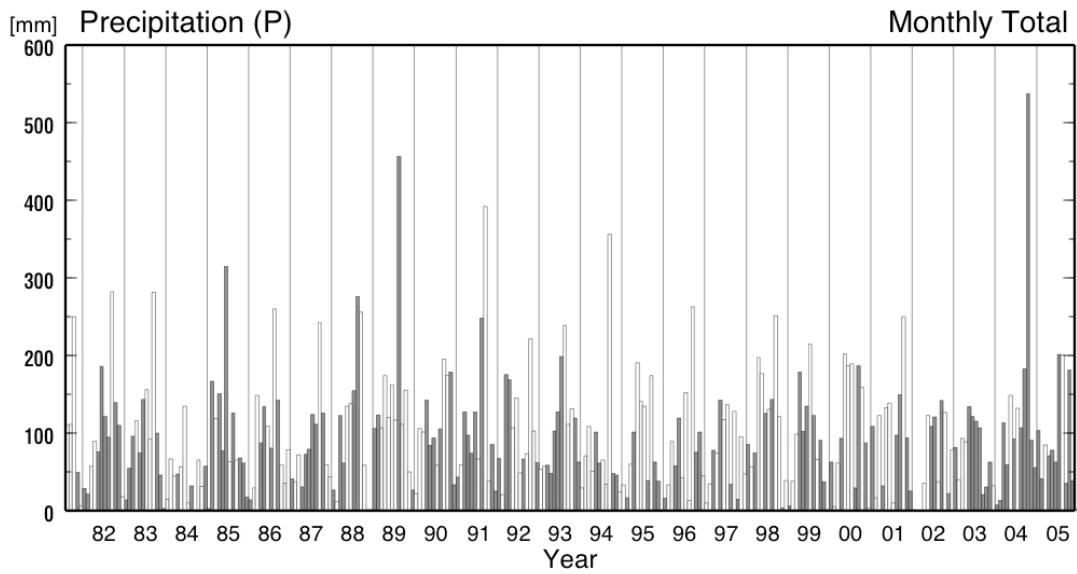
・ 露点温度 12.3 m (TD-2)



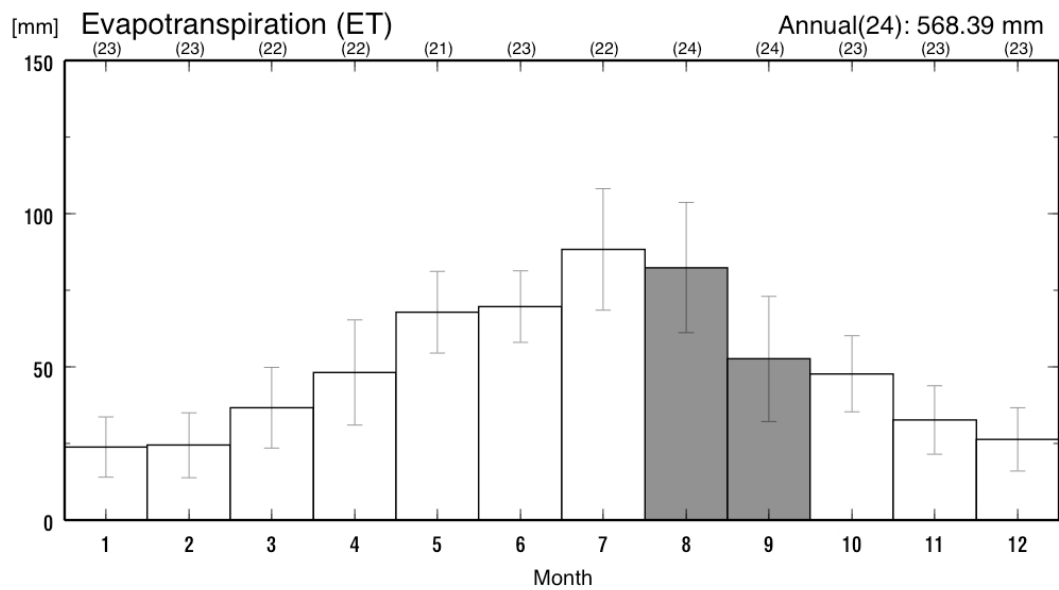
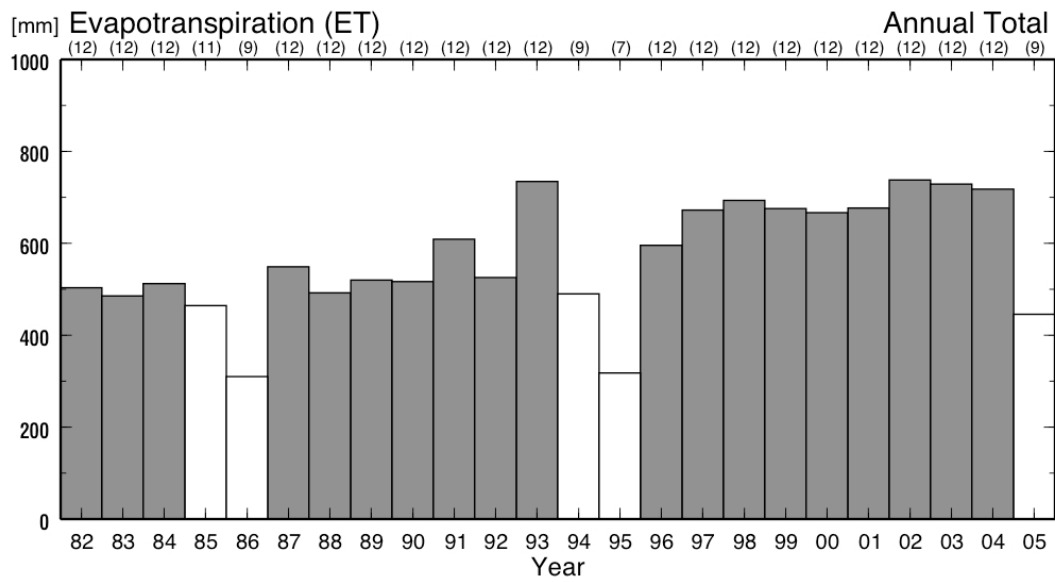
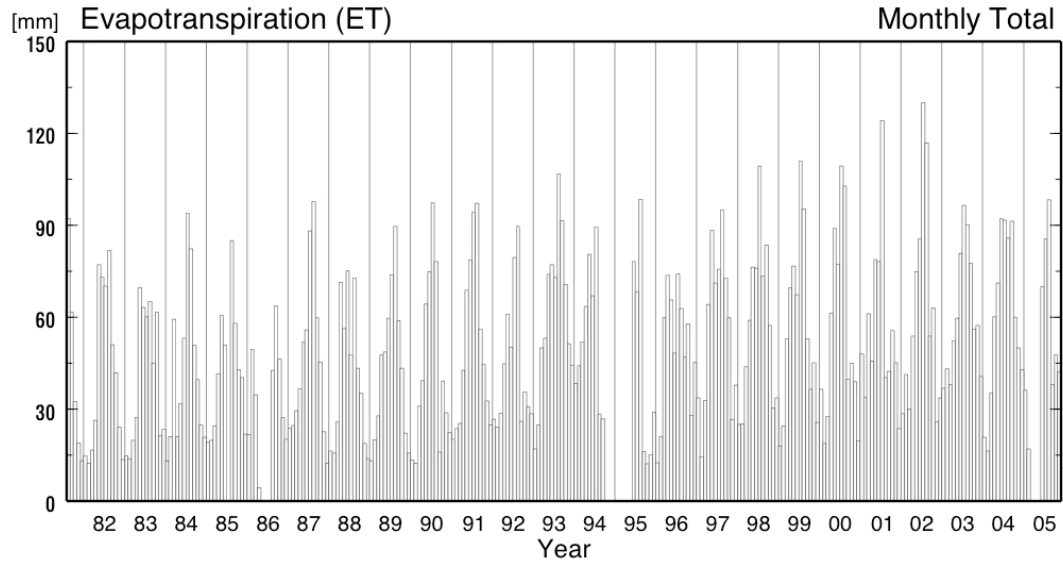
・ 露点温度 29.5 m (TD-3)



・ 降水量 (P)



・ 蒸発散量 (ET)



・ 気圧 (AP)

